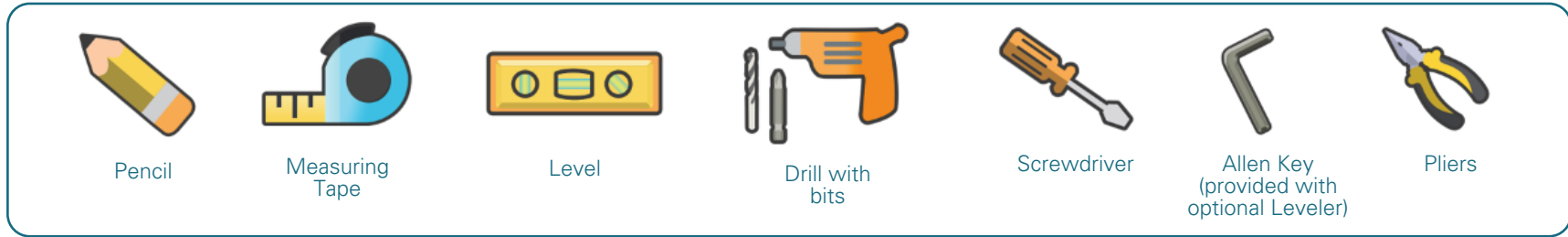
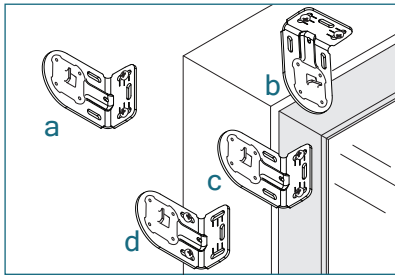


TOOLS NEEDED

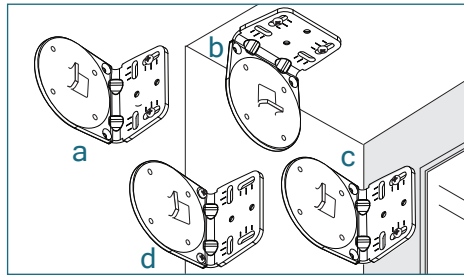


INSTALLING THE BRACKETS

STANDARD+ BRACKETS



HEAVY DUTY+ BRACKETS



Mount into wood or metal studs or into concrete with concrete anchors. Drywall anchors are not recommended.

Determine the mounting location.
a) surface/wall b) ceiling c) on frame d) in recess

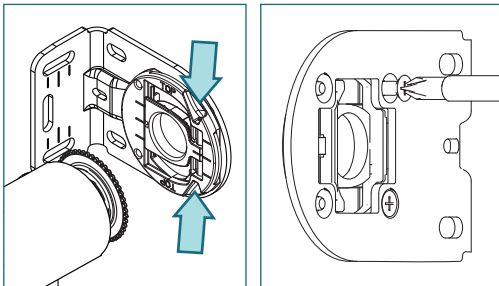
Measure and mark the bracket locations with a pencil.

Mount brackets with the screws provided. Pre-drilling is recommended.

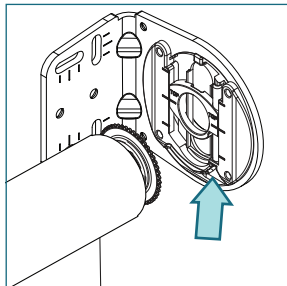
Check that the brackets are level and aligned.

OPTIONAL: INTEGRATED LEVELER

STANDARD+ BRACKET



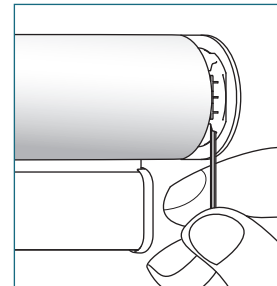
HEAVY DUTY+ BRACKET



Ensure the leveling set screw opening is pointing downwards before installing the bracket.

On the Standard+ Bracket, the orientation can be changed by loosening the two screws (M3x6) and turning the leveler 90°. Fix the screws after turning.

ADJUST LEVELER



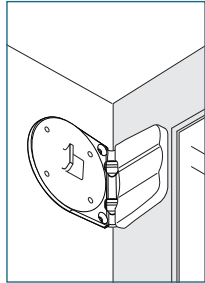
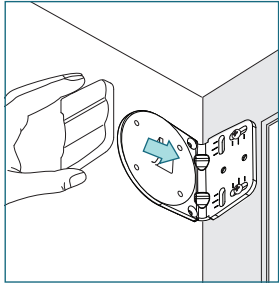
Insert the provided Allen key into the set screw of the leveler.

Adjust skewing by turning the Allen key left or right to move the shade up or down. Support the shade with your hand if necessary.

All adjustments can be made after the shade has been installed and after the operation has been tested.

SCREW COVER INSTALLATION

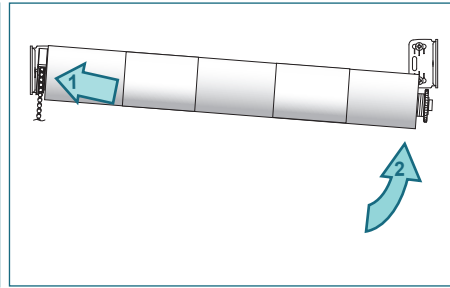
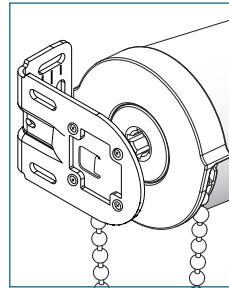
HEAVY DUTY+ BRACKET SCREW COVERS



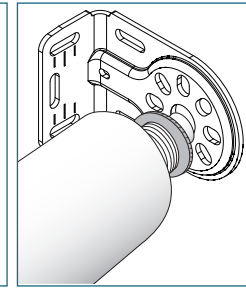
Slide the screw cover over the bracket until it snaps in place.

INSTALLING THE SHADE - Do not remove the tape around the shade until it is fully installed

CLUTCH BRACKET



IDLE BRACKET

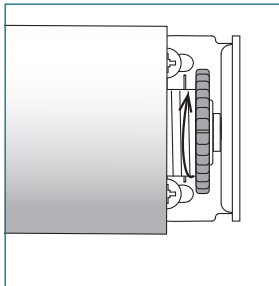


Place the clutch onto the clutch bracket.

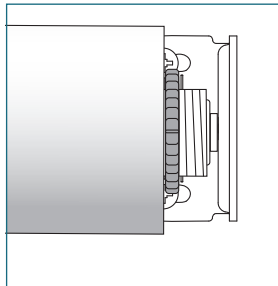
Push the shade against the clutch end and lift the roller shade up until the end plug fits into the center of the idle bracket.

LOCK THE SHADE

UNLOCKED

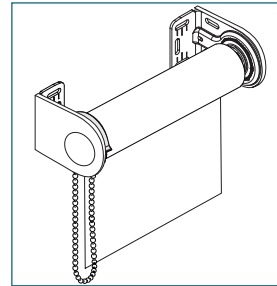


LOCKED



Rotate the nut on the idle end clockwise until it meets the tube. This locks the shade into position.

CHECK SHADE OPERATION

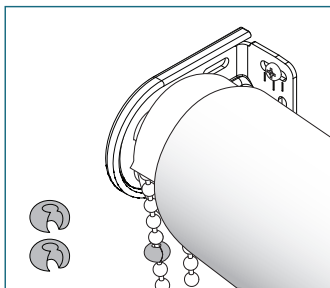


Remove the tape from the shade.

Make sure the shade operates properly.
Pull the front chain down to raise the shade.
Pull the back chain down to lower the shade.

Adjust leveler if applicable.

BALL STOP INSTALLATION



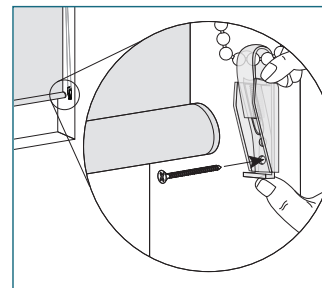
SET LOWER LIMIT

Lower shade to the bottom of the window opening. Place a ball stop over the chain in front of the clutch and secure using pliers.

SET UPPER LIMIT

Raise shade to the desired height. Place a ball stop over the chain in back of the clutch and secure using pliers.

CORD TENSIONER INSTALLATION



Be sure the cord tensioner is not placed in the path of the bottom rail and fabric.

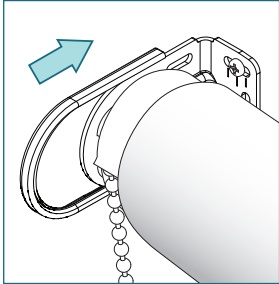
Unlock the cord tensioner by removing the plug from the screw hole and pushing down.

Hold the cord tensioner firmly in place and check that the bead chain, ball stop, and chain connector can move freely through it. The chain should not be taught.

Mark the screw hole with a pencil. Attach the cord tensioner directly to the wall using a 1½" screw. Use a wall anchor if necessary.

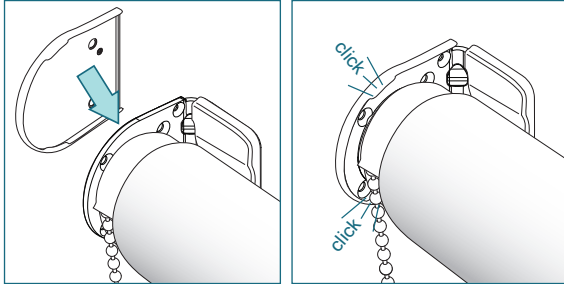
BRACKET COVER INSTALLATION

STANDARD+ BRACKET



Slide the end caps onto the brackets.

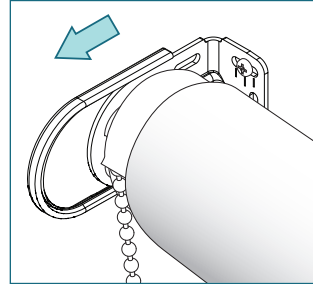
HEAVY DUTY+ BRACKET



Snap the end caps onto the brackets until it clicks into place.

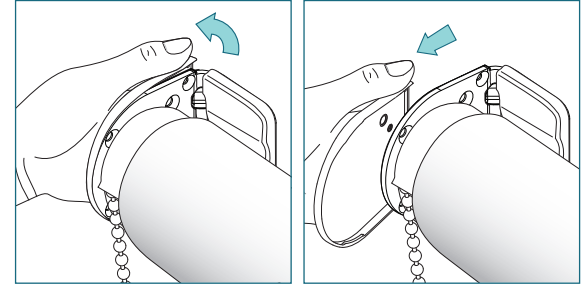
BRACKET COVER REMOVAL

STANDARD+ END CAPS



Slide the end cap towards you to remove from the bracket.

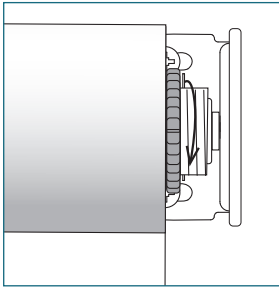
HEAVY DUTY+ END CAPS



Lift the backside of the endcap away from the bracket, then slide the end cap towards you.

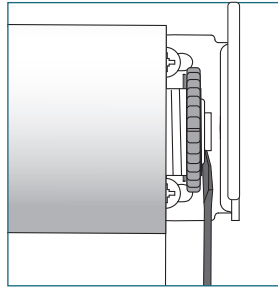
SHADE REMOVAL

UNLOCK THE SHADE



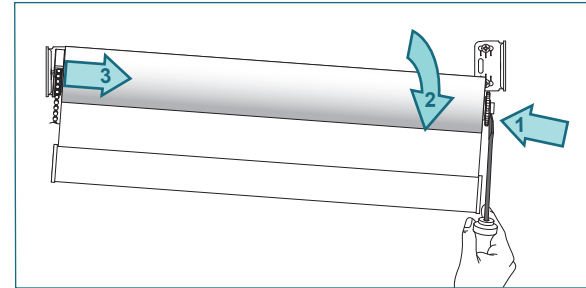
Rotate the nut on the idle end counterclockwise to unlock the shade.

REMOVE IDLE END



Slide a flat head screwdriver between the idle end plug and bracket and push towards the clutch end to remove the plug from the bracket.

REMOVE CLUTCH END



Move the shade downward and out of the clutch bracket.