

Heavy Duty+ with 7" Dual Fascia

Manual Clutch Installation

TOOLS NEEDED



Pencil

Measuring
Tape

Level

Drill with
bits

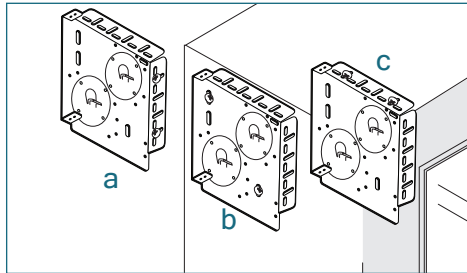
Screwdriver

Allen Key
(provided with
optional Leveler)

Pliers

INSTALLING THE BRACKETS

7" DUAL FASCIA BRACKETS



Mount into wood or metal studs or into concrete with concrete anchors. Drywall anchors are not recommended.

Determine the mounting location.
a) surface/wall b) end mount c) ceiling

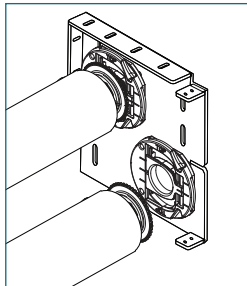
Measure and mark the bracket locations with a pencil.

Mount brackets with the screws provided. Pre-drilling is recommended.

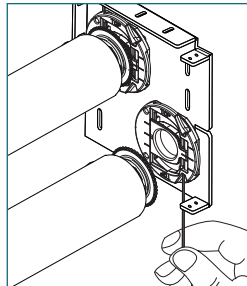
Check that the brackets are level and aligned.

OPTIONAL: INTEGRATED LEVELER

IDLE END



ADJUST LEVELER



Insert the provided Allen key into the set screw of the leveler.

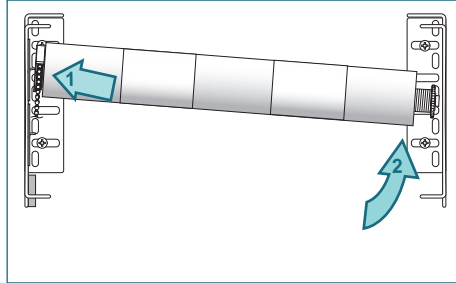
Adjust skewing by turning the Allen key left or right to move the shade up or down. Support the shade with your hand if necessary.

All adjustments can be made after the shade has been installed and after the operation has been tested.

Heavy Duty+ with 7" Dual Fascia Manual Clutch Installation

INSTALLING THE SHADE - Do not remove the tape around the shade until it is fully installed

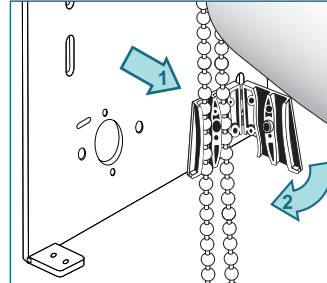
BACK SHADE



Install the back shade first. Place the clutch onto the clutch bracket.

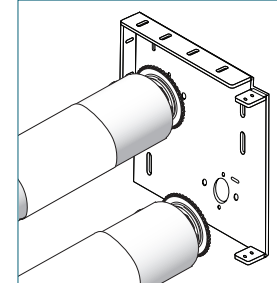
Push the shade against the clutch end and lift the roller shade up until the end plug fits into the center of the idle bracket.

BACK SHADE CHAIN GUIDE



Place the back shade's chain into the chain guide. Close the chain guide. Make sure it snaps in place.

IDLE BRACKET VIEW

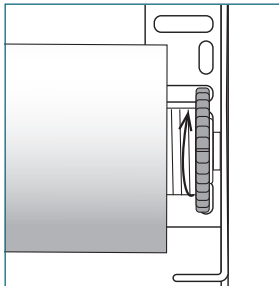


Install the front shade. Place the clutch onto the clutch bracket.

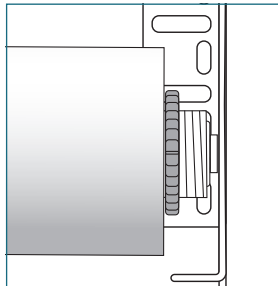
Push the shade against the clutch end and lift the roller shade up until the end plug fits into the center of the idle bracket.

LOCK THE SHADE

UNLOCKED

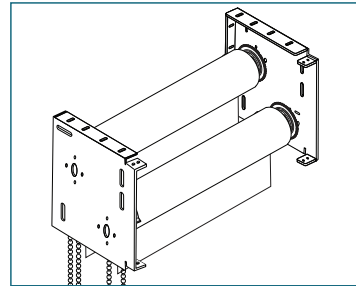


LOCKED



Rotate the nut on the idle end clockwise until it meets the tube. This locks the shade into position.

CHECK SHADE OPERATION

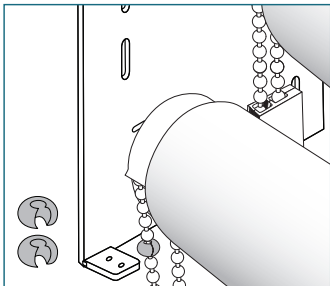


Remove the tape from shades.

Make sure both shades operate properly. Pull the front chain down to raise the shade. Pull the back chain down to lower the shade.

Adjust levelers if applicable.

BALL STOP INSTALLATION



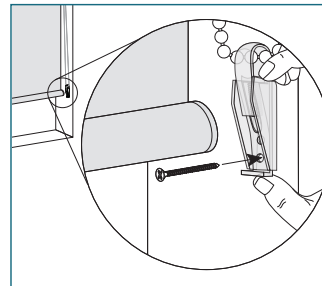
SET LOWER LIMIT

Lower shade to the bottom of the window opening. Place a ball stop over the chain in front of the clutch and secure using pliers.

SET UPPER LIMIT

Raise shade to the desired height. Place a ball stop over the chain in back of the clutch and secure using pliers.

CORD TENSIONER INSTALLATION



Be sure the cord tensioner(s) is not placed in the path of the bottom rail and fabric.

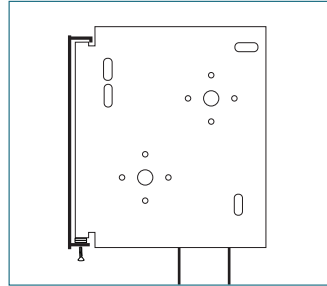
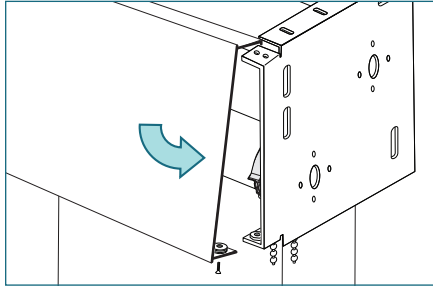
Unlock the cord tensioner by removing the plug from the screw hole and pushing down.

Hold the cord tensioner firmly in place and check that the bead chain, ball stop, and chain connector can move freely through it. The chain should not be taught.

Mark the screw hole with a pencil. Attach the cord tensioner directly to the wall using a 1½" screw. Use a wall anchor if necessary.

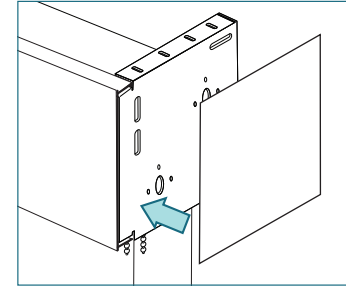
Heavy Duty+ with 7" Dual Fascia Manual Clutch Installation

FASCIA INSTALLATION



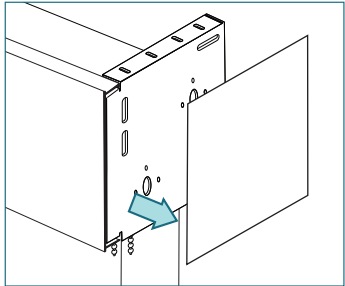
The fascia will come with 2 bolts, 2 nuts, and 4 washers.
Place the top of the fascia on the ledge of the brackets.
The washers are placed at the bottom between the fascia and the bracket to ensure a tight fit. Use two washers on each side.
Bolt the fascia to the bracket at the bottom with the provided bolt and nut. Use a screwdriver to tighten in place.

END PLATE INSTALLATION



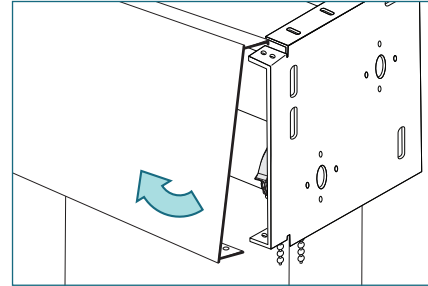
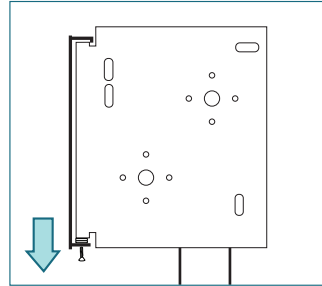
Remove tape from end plate and attach to bracket.

END PLATE REMOVAL



Peel the end plate from the bracket. Use a flat head screw driver to pry off if necessary.

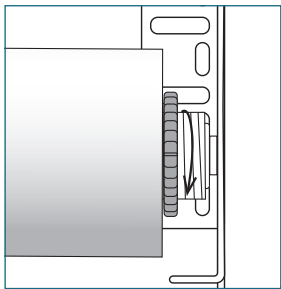
FASCIA REMOVAL



Remove the screw, nut, and washers.
Swing the fascia out from the bottom and lift it off the bracket.

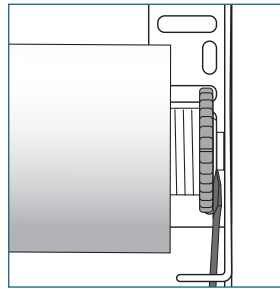
SHADE REMOVAL

UNLOCK THE SHADE



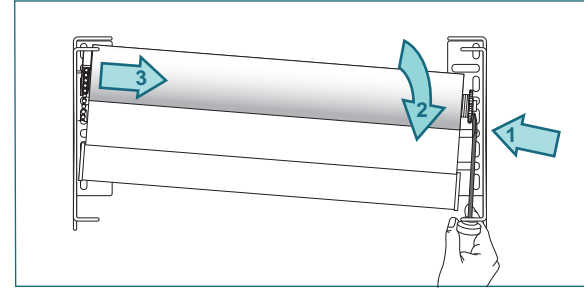
Rotate the nut on the idle end counterclockwise to unlock the shade.

REMOVE IDLE END



Slide a flat head screwdriver between the idle end plug and bracket and push towards the clutch end to remove the plug from the bracket.

REMOVE CLUTCH END



Move the shade downward and out of the clutch bracket.