

TOOLS NEEDED



Pencil



Measuring
Tape



Level



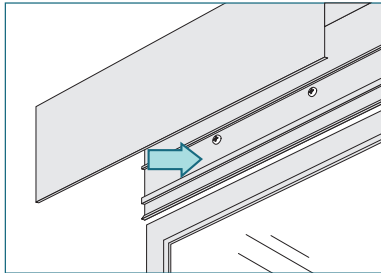
Drill with
bits



Screwdriver

INSTALLING A POCKET

SURFACE/WALL MOUNT

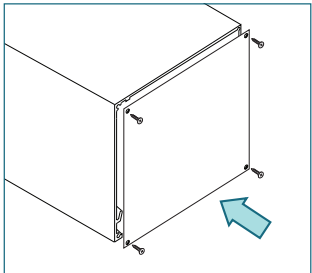


Mount into wood or metal studs or into concrete with concrete anchors. Drywall anchors are not recommended.

Determine the mounting location.

Pre-drill the pocket. Mount in place.

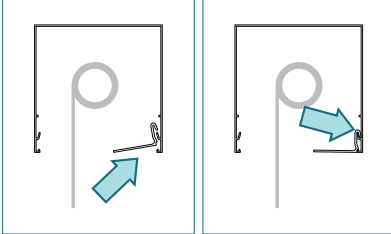
END PLATES



Use a screwdriver to attach the end plates with the screws provided.

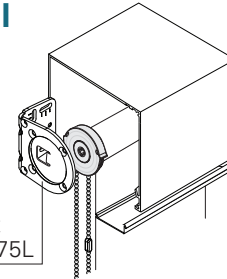
BOTTOM CLOSURES

Side View



Tilt the bottom closure inside the front edge of the pocket until the closure catches on the inside ledge.

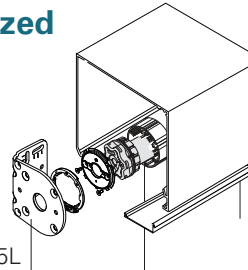
Manual Single Shade



Manual
Bracket
55L or 75L

Surface Mounted
Use bracket and shade instructions for Standard+ & Heavy Duty+ Manual

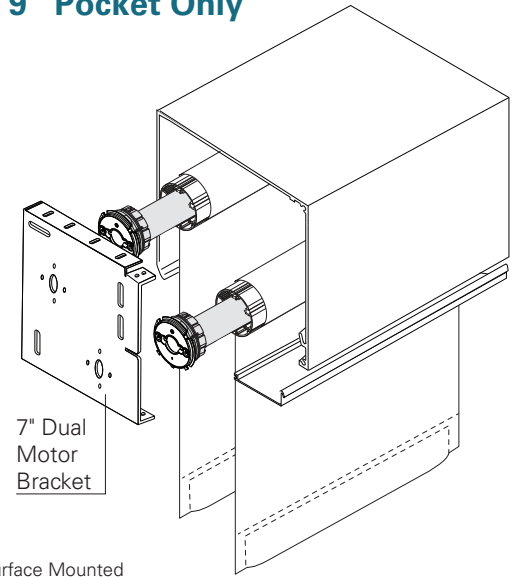
Motorized Single Shade



Motor
Bracket
55L or 75L

Surface Mounted
Use bracket and shade instructions for RB 500 Heavy Duty Bracket Motorized

Dual Shade 9" Pocket Only



7" Dual
Motor
Bracket

Surface Mounted
Use bracket and shade instructions for Heavy Duty+ 7" Dual Bracket Motorized or Manual

RB 500™ Sonesse 50 RTS 506S2 & 510S2 Motor with 7" Dual Brackets in 9" Pocket

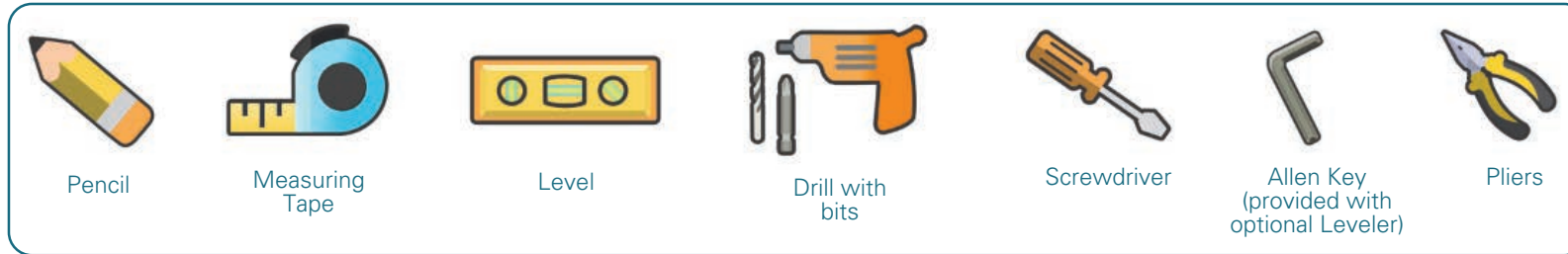
Roller Shades Motorized Shade Installation Series 5-216

2 of 3

Compatible Motors

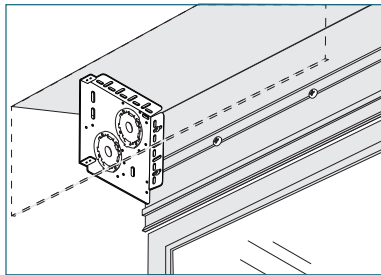
LT50 RA 525A2
LT50 Altus RTS 525A2
Sonesse 50 RTS 506S2
Sonesse 50 DCT 506S2
Sonesse 50 RA 506S2
Sonesse 50 RS485 506S2
Sonesse 50 RTS 510S2
Sonesse 50 DCT 510S2
Sonesse 50 RA 510S2
Sonesse 50 RS485 510S2
Sonesse ULTRA 50 RTS 506A2
Sonesse ULTRA 50 RA 506A2
Sonesse ULTRA 50 RS485 506A2
LT50 RS485 515S2
LT50 RS485 535A2
Sonesse ULTRA 50 DC RTS 504A8
Sonesse 50 DC RS485 504A8
Sonesse 30 RTS
Sonesse 30 DCT
Sonesse 30 RS485

TOOLS NEEDED



INSTALLING THE BRACKETS

7" DUAL BRACKETS IN A 9" POCKET



Determine the mounting location inside the pocket.

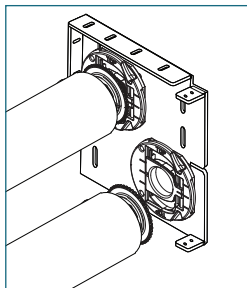
Measure and mark the bracket locations with a pencil.

Mount brackets with the screws provided. Pre-drilling is recommended.

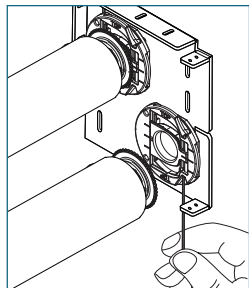
Check that the brackets are level and aligned.

OPTIONAL: INTEGRATED LEVELER

IDLE END



ADJUST LEVELER



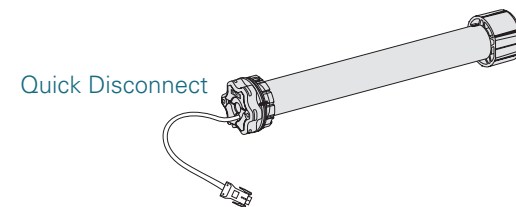
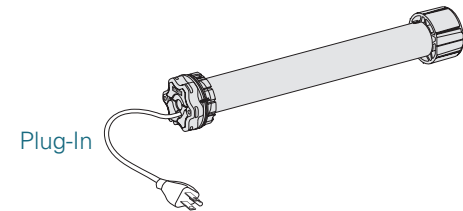
Insert the provided Allen key into the set screw of the leveler.

Adjust skewing by turning the Allen key left or right to move the shade up or down. Support the shade with your hand if necessary.

All adjustments can be made after the shade has been installed and after the operation has been tested.

MOTORS

Sonesse 50 RTS 506S2 & 510S2 120V AC



040419

Las Vegas • Chicago
800.229.5300
HDhospitality.com

© 2018 Hunter Douglas. All rights reserved. All trademarks used herein are the property of Hunter Douglas or their respective owners.

HunterDouglas
Hospitality

RB 500[™] Sonesse 50 RTS 506S2 & 510S2 Motor with 7" Dual Brackets in 9" Pocket

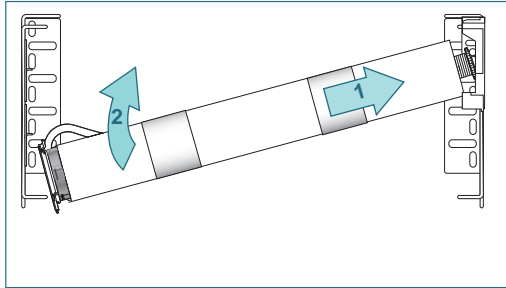
3 of 3

Roller Shades

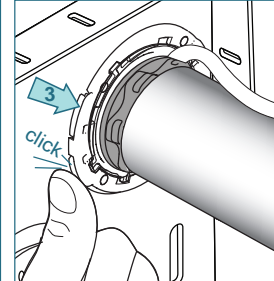
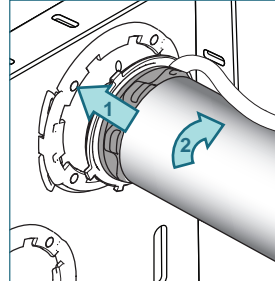
Motorized Shade Installation Series 5-216

INSTALLING THE SHADE - Do not remove the tape around the shade until it is fully installed

MOTOR BRACKET



Push the shade against the idle end and lift the roller shade up until the motor front plate fits into the motor bracket.

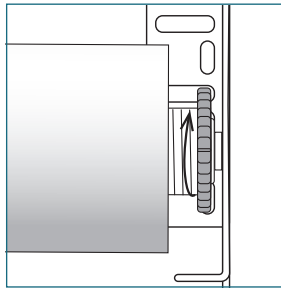


Turn the roller shade approximately 10° in the rolling direction and close both fasteners of the brackets.

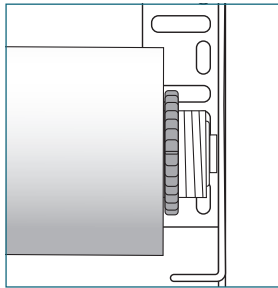
Repeat to install the front shade.

LOCK THE SHADE

UNLOCKED

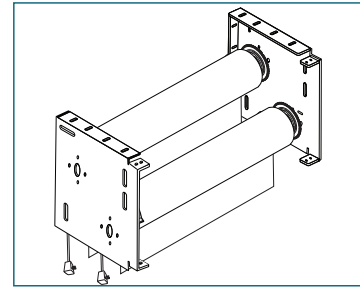


LOCKED



Rotate the nut on the idle end clockwise until it meets the tube. This locks the shade into position.

CHECK SHADE OPERATION



Remove the tape from the shade.

Make sure the shade operates properly. Use separate wiring information per motor type and programming instructions from HDhospitality.com

Adjust leveler if applicable.

SHADE REMOVAL

DISCONNECT THE MOTOR

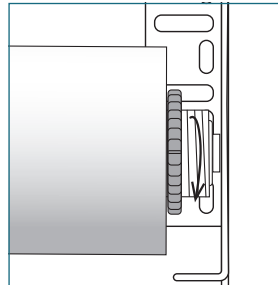
Disconnect the power cable from the electrical source.

Plug-in: Unplug from the outlet

Quick Disconnect: Unplug the quick disconnect cables

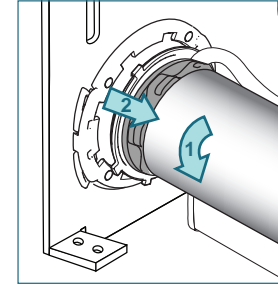
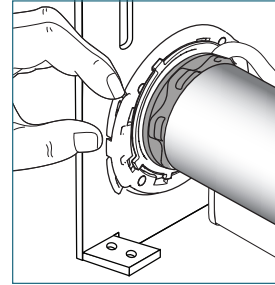
Wired to the junction box: Electrician is required

UNLOCK THE SHADE



Rotate the nut on the idle end counterclockwise to unlock the shade.

RELEASE THE SHADE



Open the bracket fasteners.

Turn the shade in the roll up direction until the motor front plate releases.

Push the shade in the direction of the idle bracket to slide it out of the bracket and down to remove it completely.