

Compatible Motors

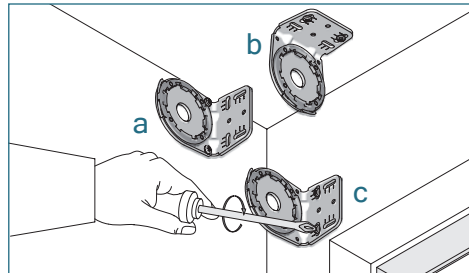
- LT50 RA 525A2
- LT50 Altus RTS 525A2
- Sonesse 50 RTS 506S2
- Sonesse 50 DCT 506S2
- Sonesse 50 RA 506S2
- Sonesse 50 RS485 506S2
- Sonesse 50 RTS 510S2
- Sonesse 50 DCT 510S2
- Sonesse 50 RA 510S2
- Sonesse 50 RS485 510S2
- Sonesse ULTRA 50 RTS 506A2
- Sonesse ULTRA 50 RA 506A2
- Sonesse ULTRA 50 RS485 506A2
- LT50 RS485 515S2
- LT50 RS485 535A2
- Sonesse ULTRA 50 DC RTS 504A8
- Sonesse 50 DC RS485 504A8
- Sonesse 30 RTS
- Sonesse 30 DCT
- Sonesse 30 RS485

TOOLS NEEDED



INSTALLING THE BRACKETS

RB 500 HEAVY DUTY BRACKETS



Mount into wood or metal studs or into concrete with concrete anchors. Drywall anchors are not recommended.

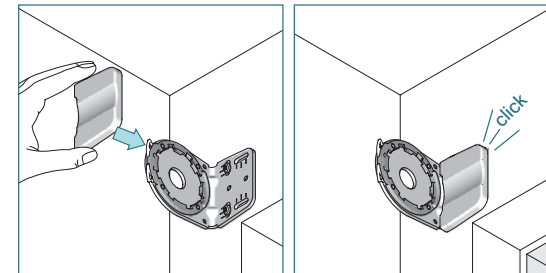
Determine the mounting location.
a) in recess b) ceiling c) surface/wall

Measure and mark the bracket locations with a pencil.

Mount brackets with the screws provided. Pre-drilling is recommended.

Check that the brackets are level and aligned.

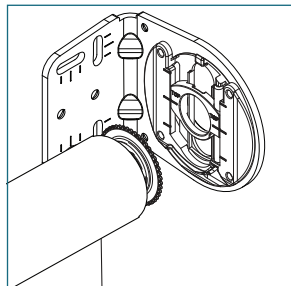
SCREW COVERS



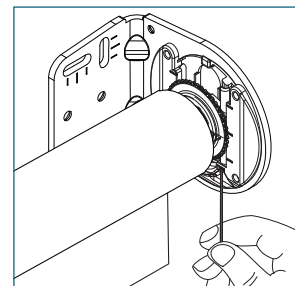
Slide the screw cover cap onto the bracket until it snaps.

OPTIONAL: INTEGRATED LEVELER

IDLE END



ADJUST LEVELER



Insert the provided Allen key into the set screw of the leveler.

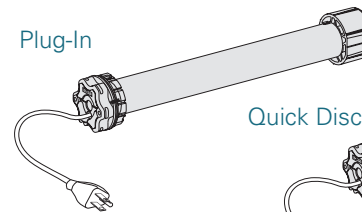
Adjust skewing by turning the Allen key left or right to move the shade up or down. Support the shade with your hand if necessary.

All adjustments can be made after the shade has been installed and after the operation has been tested.

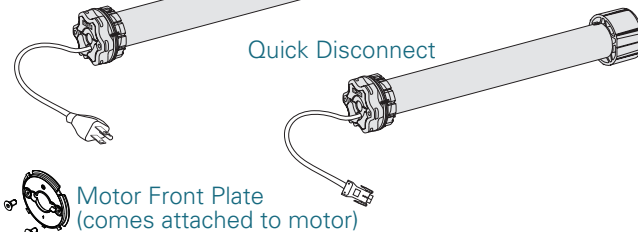
MOTORS

Sonesse 50 RTS 506S2 & 510S2 120V AC

Plug-In



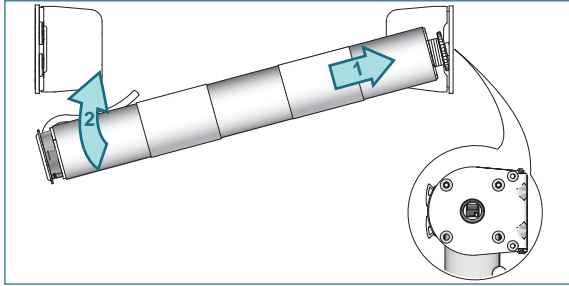
Quick Disconnect



Motor Front Plate (comes attached to motor)

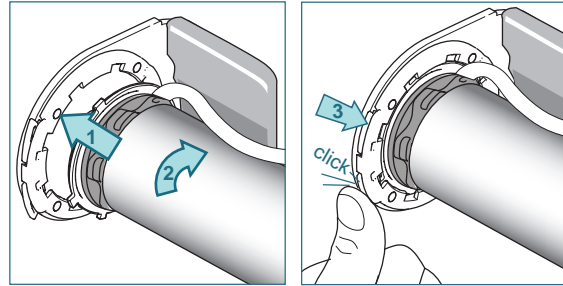
INSTALLING THE SHADE - Do not remove the tape around the shade until it is fully installed

INSTALL INTO IDLE BRACKET



Place the roller shade end plug into the idle end bracket. Push the shade against the idle end and lift the motor end up.

INSTALL INTO MOTOR BRACKET



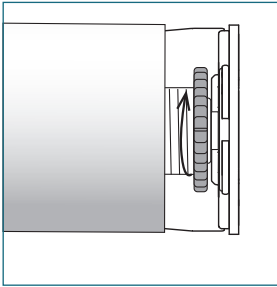
Fit the motor front plate into the motor bracket.

Turn the shade approximately 10° in the rolling direction.

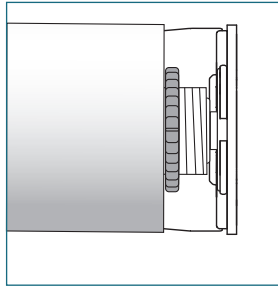
Close both bracket fasteners.

LOCK THE SHADE

UNLOCKED

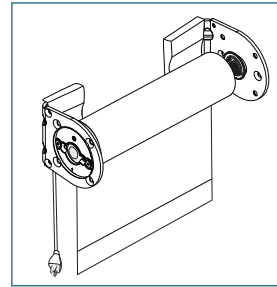


LOCKED



Rotate the nut on the idle end clockwise until it meets the tube. This locks the shade into position.

CHECK SHADE OPERATION

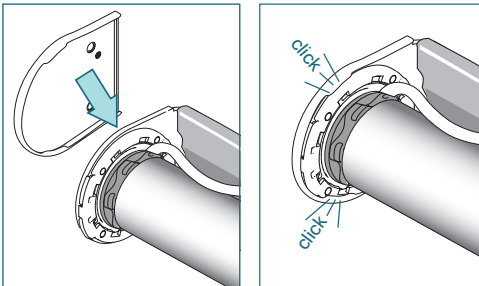


Remove the tape from the shade.

Make sure the shade operates properly. Use separate wiring information per motor type and programming instructions from HDhospitality.com

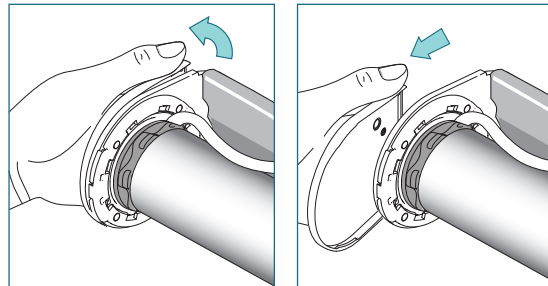
Adjust leveler if applicable.

BRACKET COVER INSTALLATION



Snap the end caps onto the brackets until it clicks into place.

BRACKET COVER REMOVAL



Lift the backside of the endcap away from the bracket, then slide the end cap towards you.

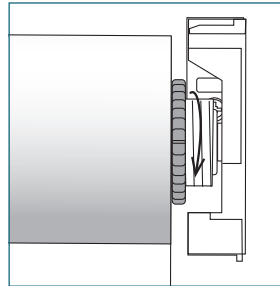
SHADE REMOVAL

DISCONNECT THE MOTOR

Disconnect the power cable from the electrical source.

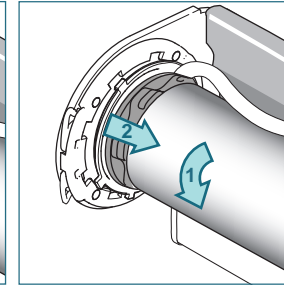
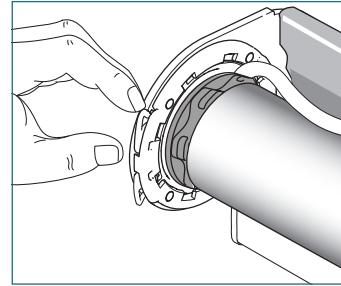
Unplug from the outlet or disconnect the quick disconnect plug.

UNLOCK THE SHADE



Rotate the nut on the idle end counterclockwise to unlock the shade.

RELEASE THE SHADE

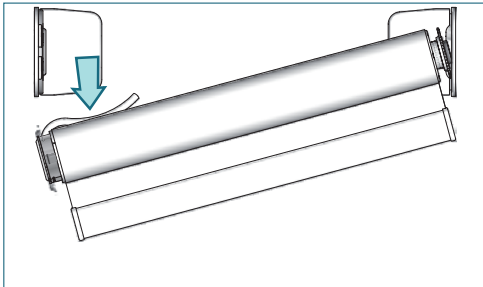


Open the bracket fasteners.

Turn the shade in the roll up direction until the motor front plate releases.

Push the shade in the direction of the idle bracket and slide it out of the bracket.

REMOVE THE SHADE



Move the shade downward and out of the brackets.