

TOOLS NEEDED



Pencil



Measuring Tape



Level



Drill with bits



Screwdriver

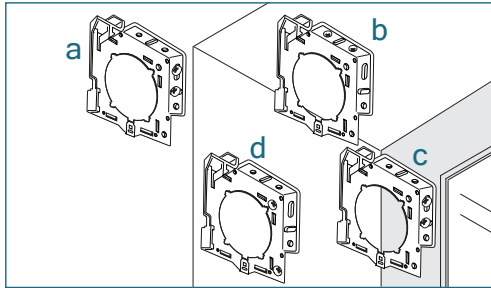


Allen Key
(provided with optional Leveler)



Pliers

INSTALLING THE BRACKETS



Mount into wood or metal studs or into concrete with concrete anchors. Drywall anchors are not recommended.

Determine the mounting location.
a) surface/wall b) ceiling c) on frame d) in recess

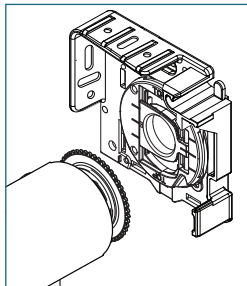
Measure and mark the bracket locations with a pencil.

Mount brackets with the screws provided. Pre-drilling is recommended.

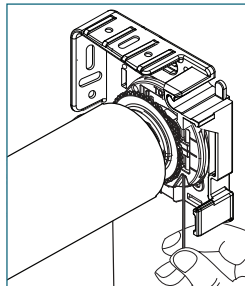
Check that the brackets are level and aligned.

OPTIONAL: INTEGRATED LEVELER

IDLE END



ADJUST LEVELER



Insert the provided Allen key into the set screw of the leveler.

Adjust skewing by turning the Allen key left or right to move the shade up or down. Support the shade with your hand if necessary.

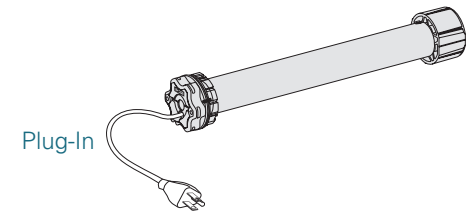
All adjustments can be made after the shade has been installed and after the operation has been tested.

Compatible Motors

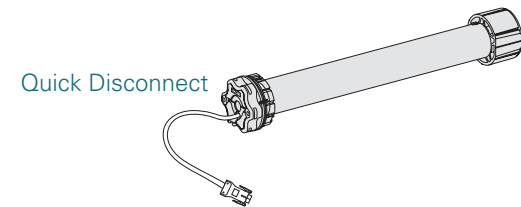
LT50 RA 525A2
LT50 Altus RTS 525A2
Sonesse 50 RTS 506S2
Sonesse 50 DCT 506S2
Sonesse 50 RA 506S2
Sonesse 50 RS485 506S2
Sonesse 50 RTS 510S2
Sonesse 50 DCT 510S2
Sonesse 50 RA 510S2
Sonesse 50 RS485 510S2
Sonesse ULTRA 50 RTS 506A2
Sonesse ULTRA 50 RA 506A2
Sonesse ULTRA 50 RS485 506A2
LT50 RS485 515S2
LT50 RS485 535A2
Sonesse ULTRA 50 DC RTS 504A8
Sonesse 50 DC RS485 504A8
Sonesse 30 RTS
Sonesse 30 DCT
Sonesse 30 RS485

MOTORS

Sonesse 50 RTS 506S2 & 510S2 120V AC



Plug-In



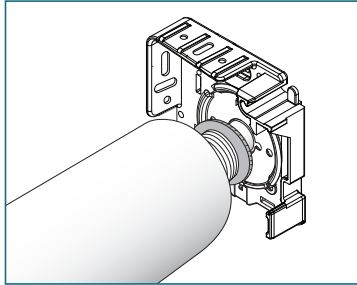
Quick Disconnect



Motor Front Plate
(comes attached to motor)

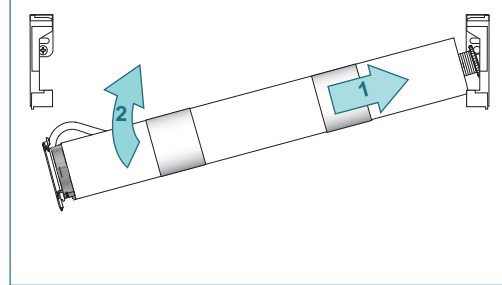
INSTALLING THE SHADE - Do not remove the tape around the shade until it is fully installed

IDLE BRACKET

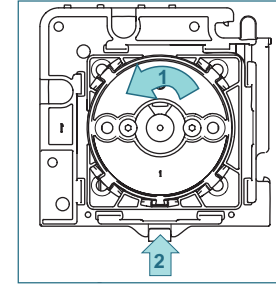


Place the end plug into the idle end bracket.

MOTOR BRACKET



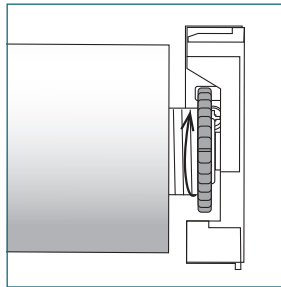
Push the shade against the idle end and lift the roller shade up until the motor front plate fits into the motor bracket.



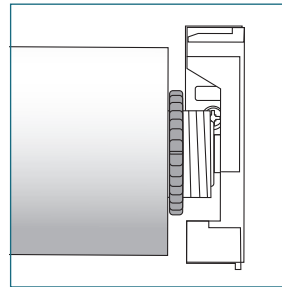
Turn the roller shade approximately 10° in the rolling direction and close both fasteners of the brackets.

LOCK THE SHADE

UNLOCKED

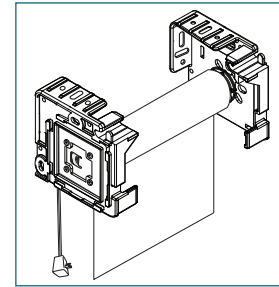


LOCKED



Rotate the nut on the idle end clockwise until it meets the tube. This locks the shade into position.

CHECK SHADE OPERATION

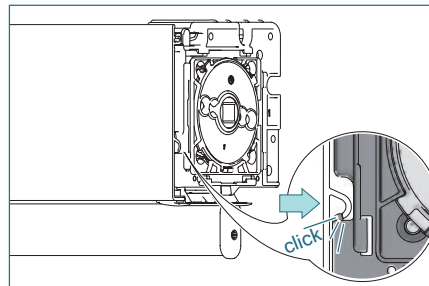
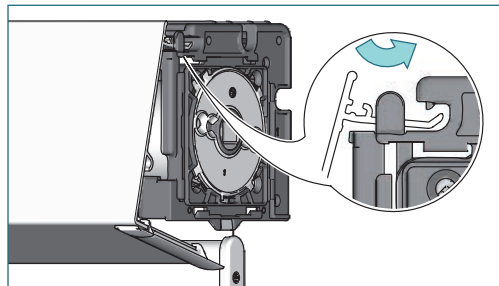


Remove the tape from the shade.

Make sure the shade operates properly. Use separate wiring information per motor type and programming instructions from HDhospitality.com

Adjust leveler if applicable.

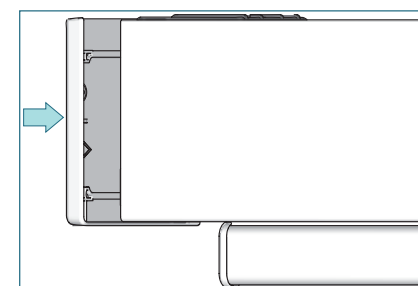
FASCIA INSTALLATION



Place the front fascia profile in the bracket. Make sure that the profile slides under the nose of the bracket.

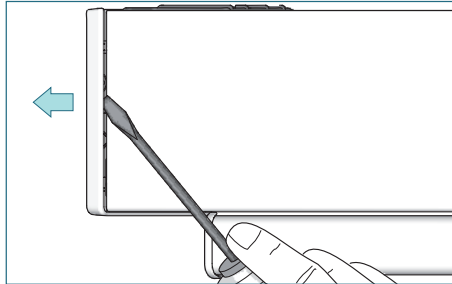
Push the profile to snap it into the bracket.

ENDCAP INSTALLATION



Slide the end caps on to the brackets.

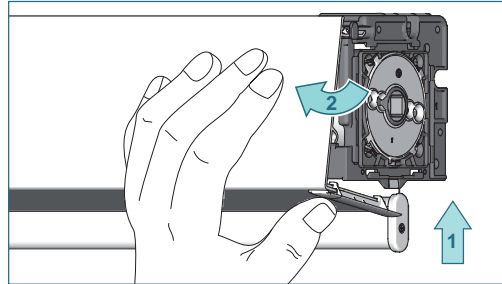
ENDCAP REMOVAL



Place the screwdriver under the end cap on the front of the fascia.

Turn the screwdriver and slide the end cap from the bracket.

FASCIA REMOVAL



Press the bottom of the profile upwards and pull it outwards.

SHADE REMOVAL

DISCONNECT THE MOTOR

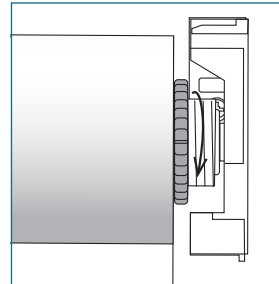
Disconnect the power cable from the electrical source.

Plug-in - unplug from the outlet

Quick Disconnect - unplug the quick disconnect cables

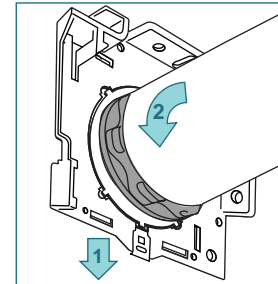
Wired to the junction box - Electrician is required

UNLOCK THE SHADE



Rotate the nut on the idle end counterclockwise to unlock the shade.

RELEASE THE SHADE

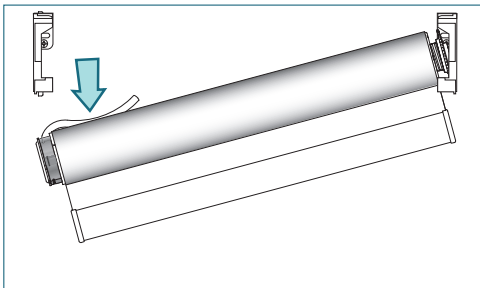


Open the fastener on the bracket by placing the screwdriver into the slot of the bracket fastener.

Slide the clip down and turn the shade towards the front of the shade.

Push the shade towards the idle end. Move the motor end down and out of the bracket.

REMOVE THE SHADE



Move the shade downward and out of the brackets.