

TOOLS NEEDED



Pencil



Measuring
Tape



Level



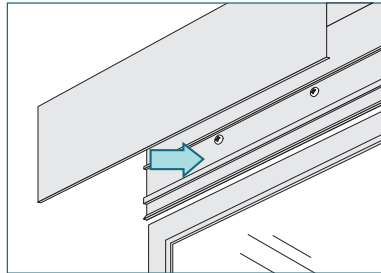
Drill with
bits



Screwdriver

INSTALLING A POCKET

SURFACE/WALL MOUNT

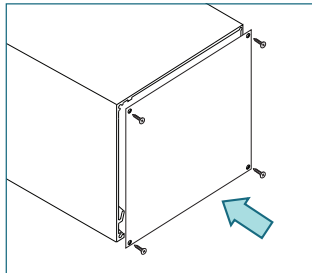


Mount into wood or metal studs or into concrete with concrete anchors. Drywall anchors are not recommended.

Determine the mounting location.

Pre-drill the pocket. Mount in place.

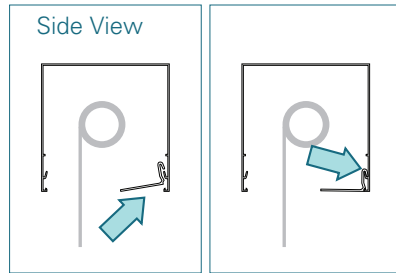
END PLATES



Use a screwdriver to attach the end plates with the screws provided.

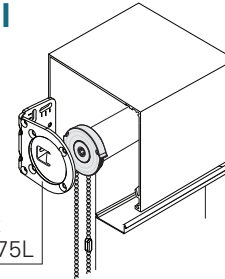
BOTTOM CLOSURES

Side View



Tilt the bottom closure inside the front edge of the pocket until the closure catches on the inside ledge.

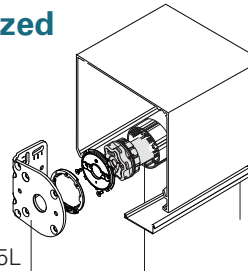
Manual Single Shade



Manual
Bracket
55L or 75L

Surface Mounted
Use bracket and shade instructions for Standard+ & Heavy Duty+ Manual

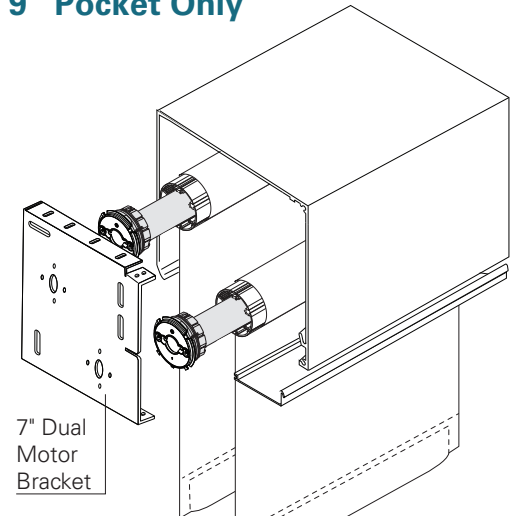
Motorized Single Shade



Motor
Bracket
55L or 75L

Surface Mounted
Use bracket and shade instructions for RB 500 Heavy Duty Bracket Motorized

Dual Shade 9" Pocket Only

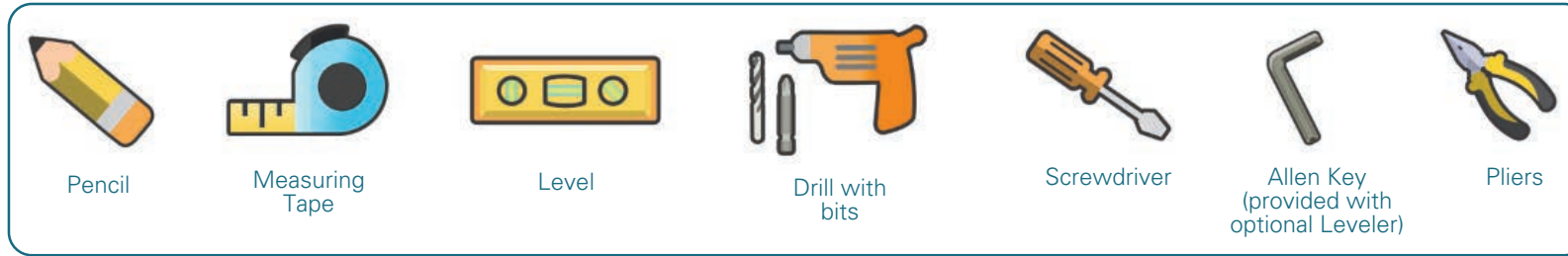


7" Dual
Motor
Bracket

Surface Mounted
Use bracket and shade instructions for Heavy Duty+ 7" Dual Bracket Motorized or Manual

Sonesse 50 RTS 506S2 & 510S2 Motor with Coupled 7" Dual Brackets in 9" Pocket Motorized Shade Installation Series 5-267-216

TOOLS NEEDED

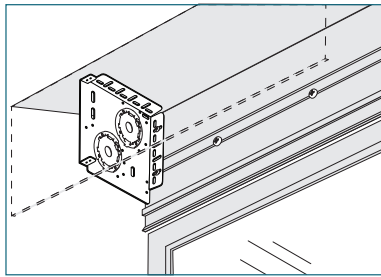


Compatible Motors

- LT50 RA 525A2
- LT50 Altus RTS 525A2
- Sonesse 50 RTS 506S2
- Sonesse 50 DCT 506S2
- Sonesse 50 RA 506S2
- Sonesse 50 RS485 506S2
- Sonesse 50 RTS 510S2
- Sonesse 50 DCT 510S2
- Sonesse 50 RA 510S2
- Sonesse 50 RS485 510S2
- Sonesse ULTRA 50 RTS 506A2
- Sonesse ULTRA 50 RA 506A2
- Sonesse ULTRA 50 RS485 506A2
- LT50 RS485 515S2
- LT50 RS485 535A2
- Sonesse ULTRA 50 DC RTS 504A8
- Sonesse 50 DC RS485 504A8
- Sonesse 30 RTS
- Sonesse 30 DCT
- Sonesse 30 RS485

INSTALLING THE BRACKETS

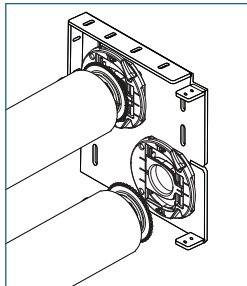
7" DUAL BRACKETS IN A 9" POCKET



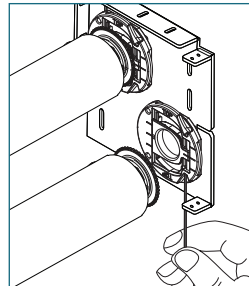
- Determine the mounting location inside the pocket.
- Measure and mark the bracket locations with a pencil.
- Mount brackets with the screws provided. Pre-drilling is recommended.
- Check that the brackets are level and aligned.

OPTIONAL: INTEGRATED LEVELER

IDLE END



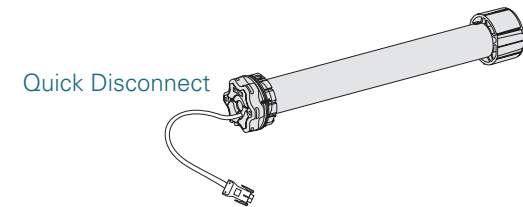
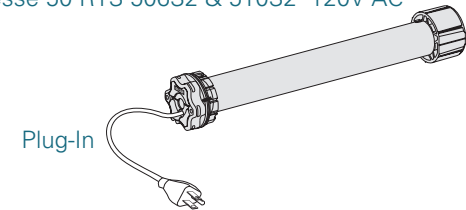
ADJUST LEVELER



- Insert the provided Allen key into the set screw of the leveler.
- Adjust skewing by turning the Allen key left or right to move the shade up or down. Support the shade with your hand if necessary.
- All adjustments can be made after the shade has been installed and after the operation has been tested.

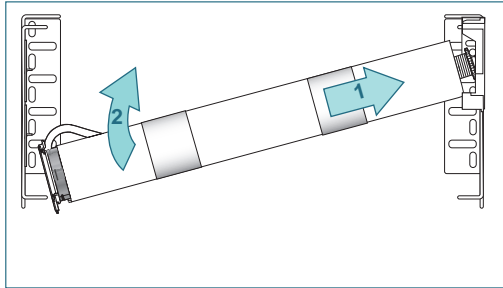
MOTORS

Sonesse 50 RTS 506S2 & 510S2 120V AC

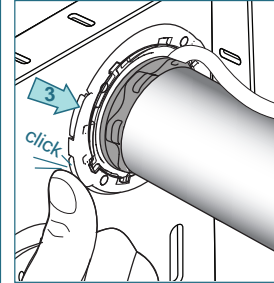
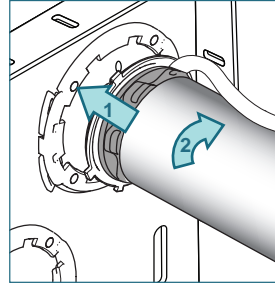


INSTALLING THE SHADE - Do not remove the tape around the shade until it is fully installed

MOTOR BRACKET



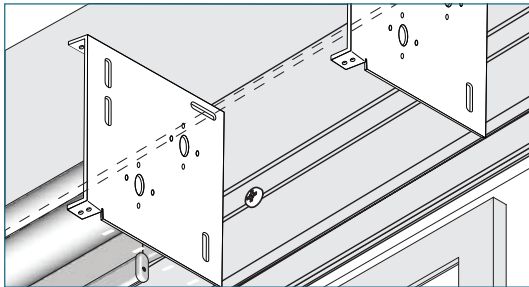
Push the shade against the idle end and lift the roller shade up until the motor front plate fits into the motor bracket.



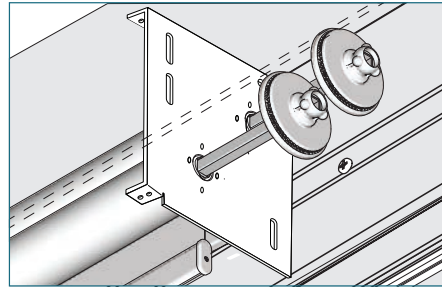
Turn the roller shade approximately 10° in the rolling direction and close both fasteners of the brackets.

Repeat to install the front shade.

MOUNT OUTER BRACKET AND COUPLER

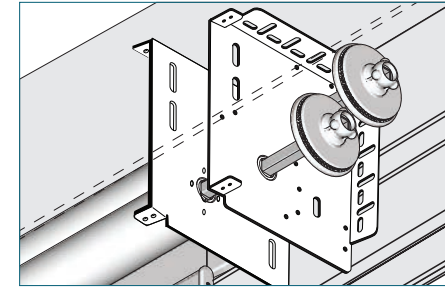


Fix the outer bracket in to the pocket with the screws provided.



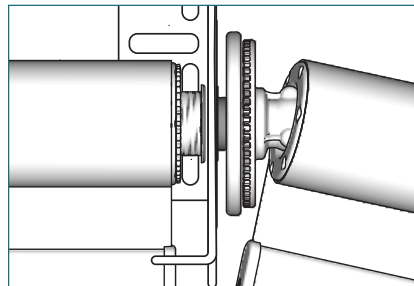
Slide the aligner or the connector through the bracket into the idle end.

COUPLING 2 INTERMEDIATE BRACKETS

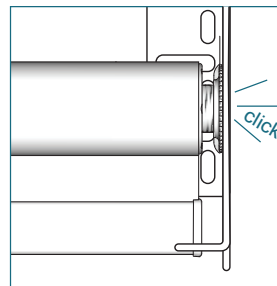
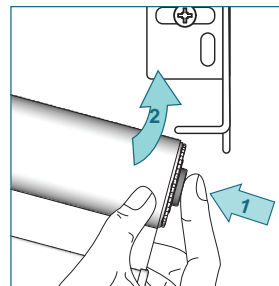


Fix the inner bracket with the screws provided. Slide the aligner or the connector through the bracket into the idle end.

MOUNT THE COUPLED SHADE

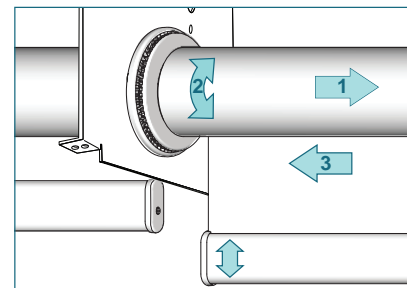


Place the tube with plug connector on the aligner or connector set head.



Press the tube bearing plug, lift the roller shade and snap into the idle bracket end.

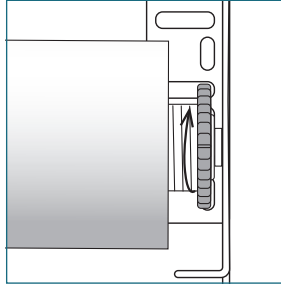
ALIGNER SET ADJUSTMENT



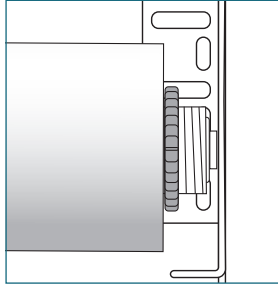
To align the bottom hembars, pull the shade away from the aligner set (1), turn the shade to line up the bottom hembars together (2). Release the shade to secure the position (3). Not possible when using a connector set.

LOCK THE SHADE

UNLOCKED

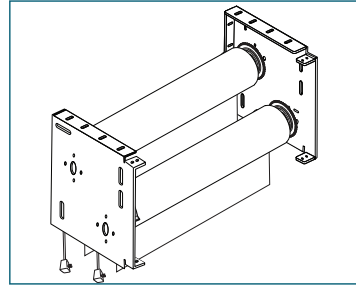


LOCKED



Rotate the nut on the idle end clockwise until it meets the tube. This locks the shade into position.

CHECK SHADE OPERATION



Remove the tape from the shade.

Make sure the shade operates properly. Use separate wiring information per motor type and programming instructions from HDhospitality.com

Adjust leveler if applicable.

SHADE REMOVAL

DISCONNECT THE MOTOR

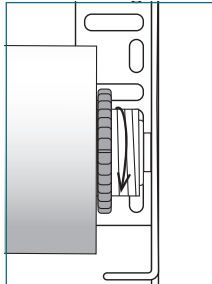
Disconnect the power cable from the electrical source.

Plug-in: Unplug from the outlet

Quick Disconnect: Unplug the quick disconnect cables

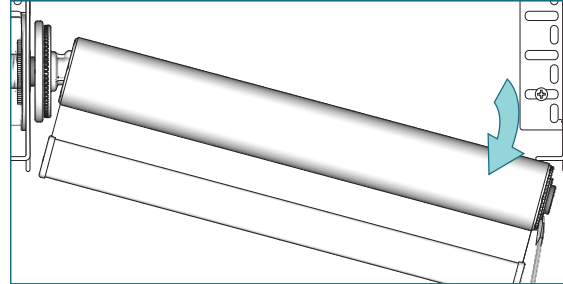
Wired to the junction box: Electrician is required

UNLOCK THE SHADES



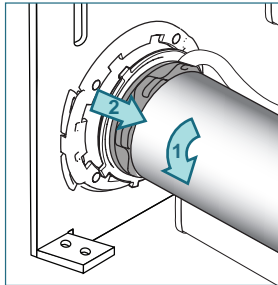
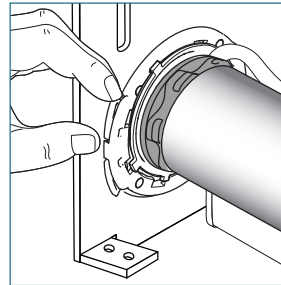
Rotate the nut on the idle end counterclockwise to unlock the shade.

REMOVE COUPLED SHADE FIRST



Place a screwdriver between the bracket and bearing plug and push towards the aligner to remove the shade. Move the shade downward and out of the bracket. Remove the aligner or connector from the bearing plug.

RELEASE THE SHADE



Open the bracket fasteners.

Turn the shade in the roll up direction until the motor front plate releases.

Push the shade in the direction of the idle bracket to slide it out of the bracket and down to remove it completely.