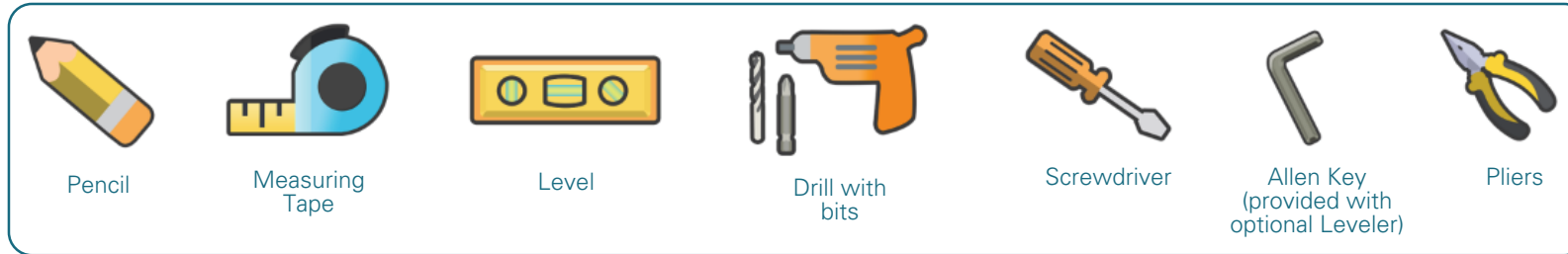


Sonesse 50 RTS 506S2 & 510S2 Motor with Coupled 7" Dual Brackets and Fascia

Motorized Shade Installation Series 5-269–216, 5-289–216

TOOLS NEEDED

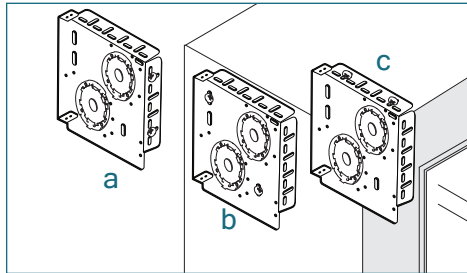


Compatible Motors

- LT50 RA 525A2
- LT50 Altus RTS 525A2
- Sonesse 50 RTS 506S2
- Sonesse 50 DCT 506S2
- Sonesse 50 RA 506S2
- Sonesse 50 RS485 506S2
- Sonesse 50 RTS 510S2
- Sonesse 50 DCT 510S2
- Sonesse 50 RA 510S2
- Sonesse 50 RS485 510S2
- Sonesse ULTRA 50 RTS 506A2
- Sonesse ULTRA 50 RA 506A2
- Sonesse ULTRA 50 RS485 506A2
- LT50 RS485 515S2
- LT50 RS485 535A2
- Sonesse ULTRA 50 DC RTS 504A8
- Sonesse 50 DC RS485 504A8
- Sonesse 30 RTS
- Sonesse 30 DCT
- Sonesse 30 RS485

INSTALLING THE BRACKETS

7" DUAL BRACKETS



Mount into wood or metal studs or into concrete with concrete anchors. Drywall anchors are not recommended.

Determine the mounting location.
a) surface/wall b) end mount c) ceiling

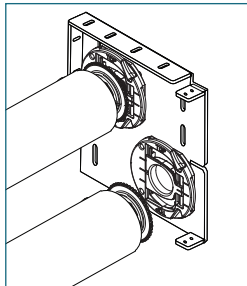
Measure and mark the bracket locations with a pencil.

Mount brackets with the screws provided. Pre-drilling is recommended.

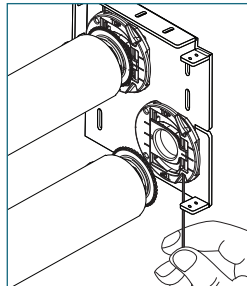
Check that the brackets are level and aligned.

OPTIONAL: INTEGRATED LEVELER

IDLE END



ADJUST LEVELER



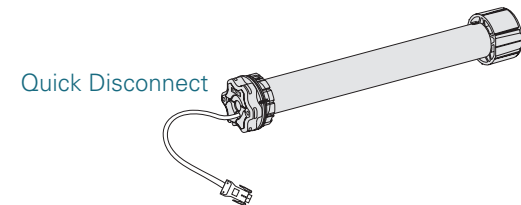
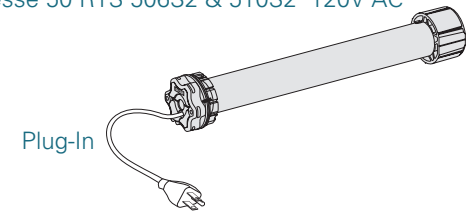
Insert the provided Allen key into the set screw of the leveler.

Adjust skewing by turning the Allen key left or right to move the shade up or down. Support the shade with your hand if necessary.

All adjustments can be made after the shade has been installed and after the operation has been tested.

MOTORS

Sonesse 50 RTS 506S2 & 510S2 120V AC

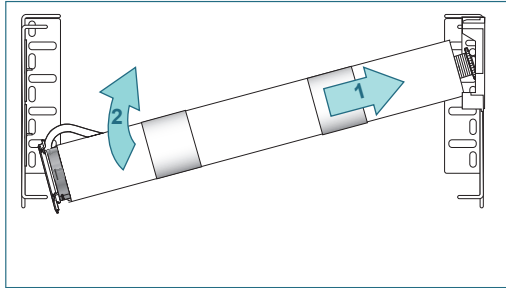


Sonesse 50 RTS 506S2 & 510S2 Motor with Coupled 7" Dual Brackets and Fascia

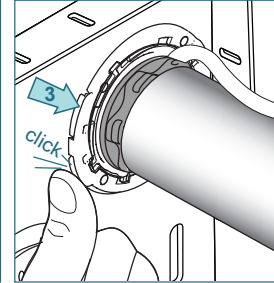
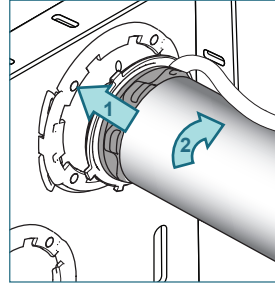
Motorized Shade Installation Series 5-269–216, 5-289–216

INSTALLING THE SHADE - Do not remove the tape around the shade until it is fully installed

MOTOR BRACKET



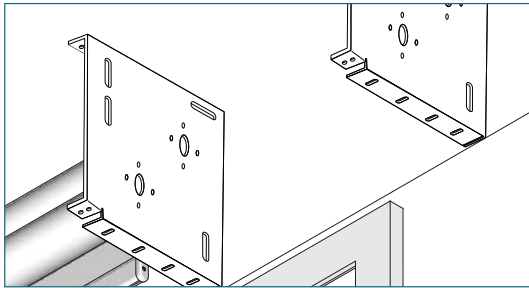
Push the shade against the idle end and lift the roller shade up until the motor front plate fits into the motor bracket.



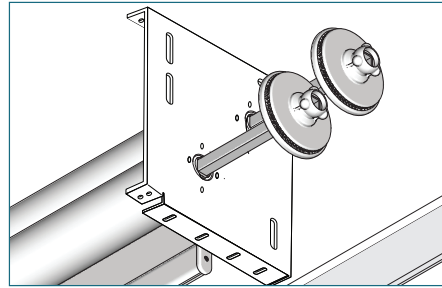
Turn the roller shade approximately 10° in the rolling direction and close both fasteners of the brackets.

Repeat to install the front shade.

MOUNT OUTER BRACKET AND COUPLER

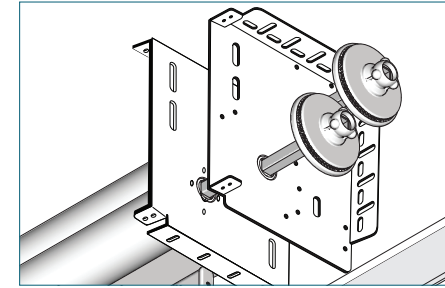


Fix the outer bracket with the screws provided.



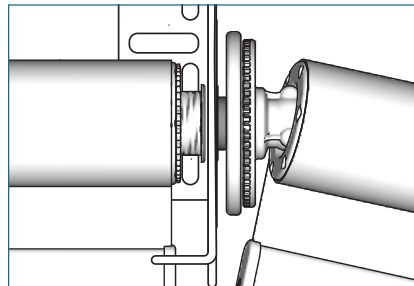
Slide the aligner or the connector through the bracket into the idle end.

COUPLING 2 INTERMEDIATE BRACKETS

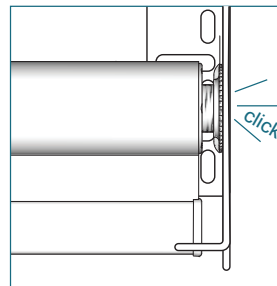
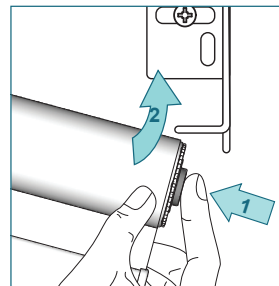


Fix the inner bracket with the screws provided. Slide the aligner or the connector through the bracket into the idle end.

MOUNT THE COUPLED SHADE

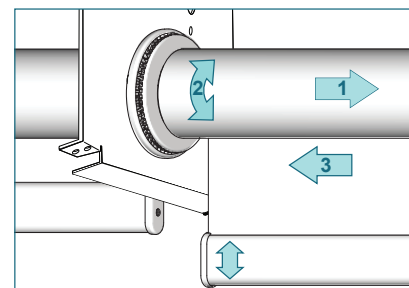


Place the tube with plug connector on the aligner or connector set head.



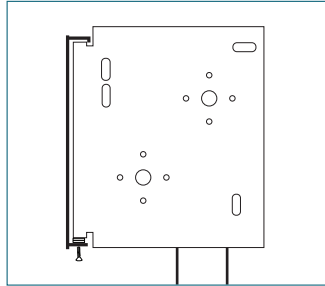
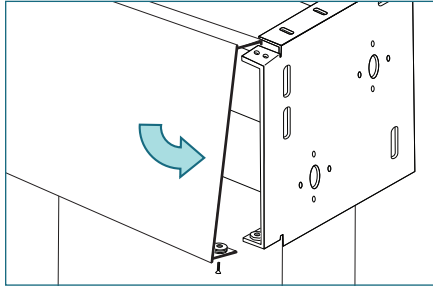
Press the tube bearing plug, lift the roller shade and snap into the idle bracket end.

ALIGNER SET ADJUSTMENT



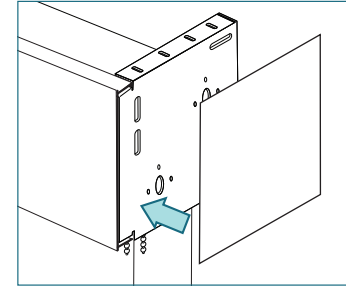
To align the bottom hembars, pull the shade away from the aligner set (1), turn the shade to line up the bottom hembars together (2). Release the shade to secure the position (3). Not possible when using a connector set.

FASCIA INSTALLATION



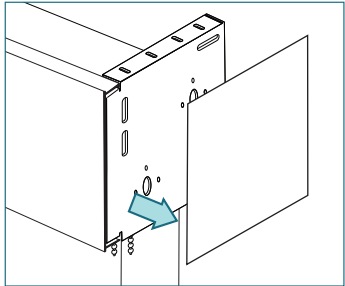
The fascia will come with 2 bolts, 2 nuts, and 4 washers. Place the top of the fascia on the ledge of the brackets. The washers are placed at the bottom between the fascia and the bracket to ensure a tight fit. Use two washers on each side. Bolt the fascia to the bracket at the bottom with the provided bolt and nut. Use a screwdriver to tighten in place.

END PLATE INSTALLATION



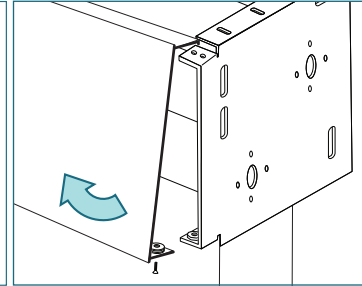
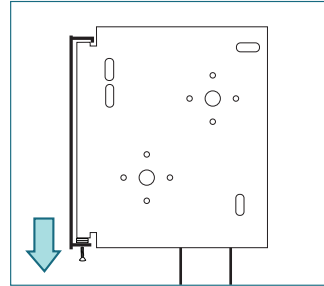
Remove tape from end plate and attach to bracket.

END PLATE REMOVAL



Peel the end plate from the bracket. Use a flat head screw driver to pry off if necessary.

FASCIA REMOVAL



Remove the screw, nut, and washers.

Swing the fascia out from the bottom and lift it off the bracket.

SHADE REMOVAL

DISCONNECT THE MOTOR

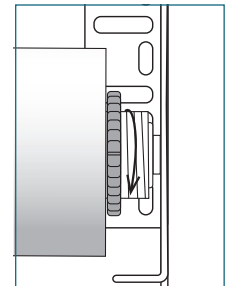
Disconnect the power cable from the electrical source.

Plug-in: Unplug from the outlet

Quick Disconnect: Unplug the quick disconnect cables

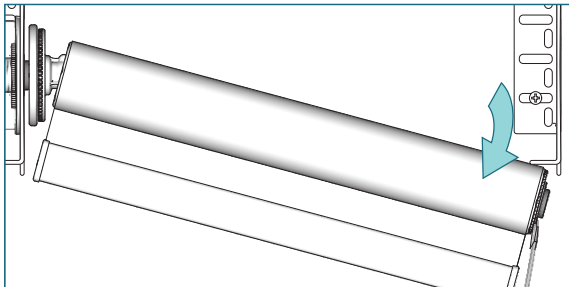
Wired to the junction box: Electrician is required

UNLOCK THE SHADES



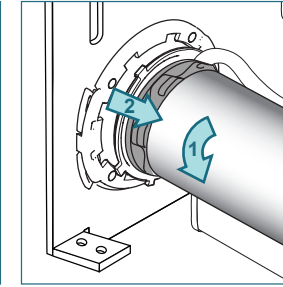
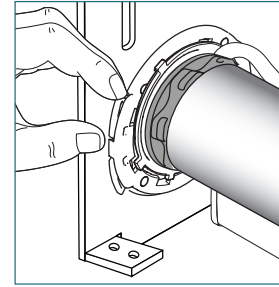
Rotate the nut on the idle end counter-clockwise to unlock the shade.

REMOVE COUPLED SHADE FIRST



Place a screwdriver between the bracket and bearing plug and push towards the aligner to remove the shade. Move the shade downward and out of the bracket. Remove the aligner or connector from the bearing plug.

RELEASE THE SHADE



Open the bracket fasteners.

Turn the shade in the roll up direction until the motor front plate releases.

Push the shade in the direction of the idle bracket to slide it out of the bracket and down to remove it completely.