

Sonesse 30 RTS and Sonesse 30 WireFree (li-ion) RTS with 3" Fascia Motorized Shade Installation

TOOLS NEEDED



Pencil



Measuring
Tape



Level



Drill with
bits



Screwdriver



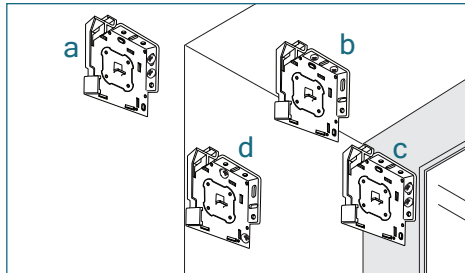
Allen Key
(provided with
optional Leveler)



Pliers

INSTALLING THE BRACKETS

STANDARD+ 3" FASCIA BRACKETS



Mount into wood or metal studs or into concrete with concrete anchors. Drywall anchors are not recommended.

Determine the mounting location.
a) surface/wall b) ceiling c) on frame d) in recess

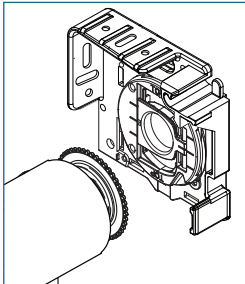
Measure and mark the bracket locations with a pencil.

Mount brackets with the screws provided. Pre-drilling is recommended.

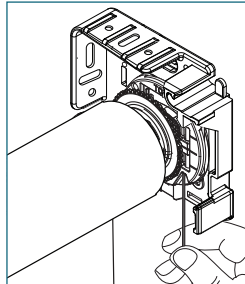
Check that the brackets are level and aligned.

OPTIONAL: INTEGRATED LEVELER

IDLE END



ADJUST LEVELER



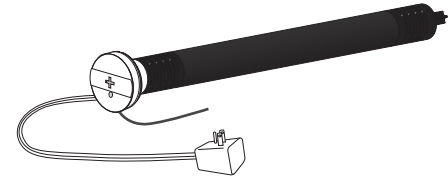
Insert the provided Allen key into the set screw of the leveler.

Adjust skewing by turning the Allen key left or right to move the shade up or down. Support the shade with your hand if necessary.

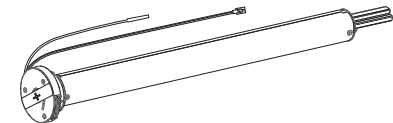
All adjustments can be made after the shade has been installed and after the operation has been tested.

MOTORS

Sonesse 30 RTS (Plug-In Only) 24V DC



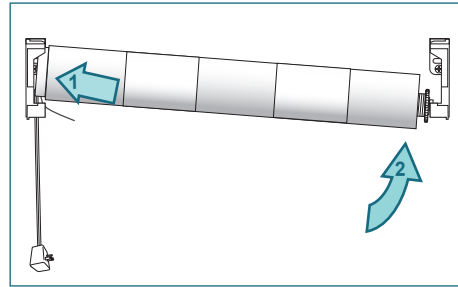
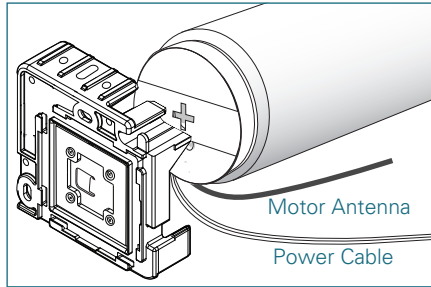
Sonesse 30 WireFree (li-ion) RTS (Rechargeable Battery) 24V DC



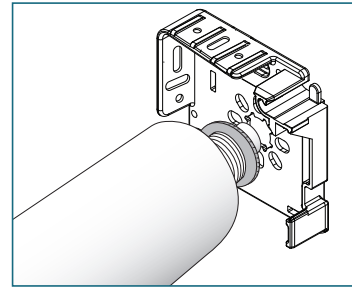
Sonesse 30 RTS and Sonesse 30 WireFree (li-ion) RTS with 3" Fascia Motorized Shade Installation

INSTALLING THE SHADE - Do not remove the tape around the shade until it is fully installed

MOTOR BRACKET



IDLE BRACKET

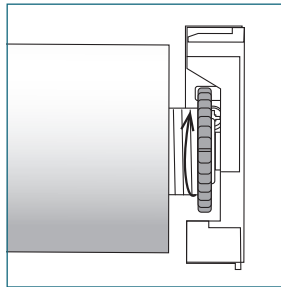


Place the motor onto the motor bracket.

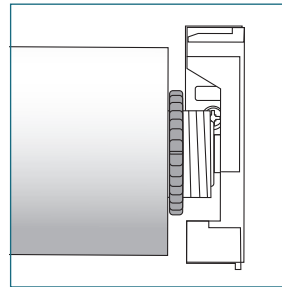
Push the shade against the motor end and lift the roller shade up until the end plug fits into the center of the idle bracket.

LOCK THE SHADE

UNLOCKED

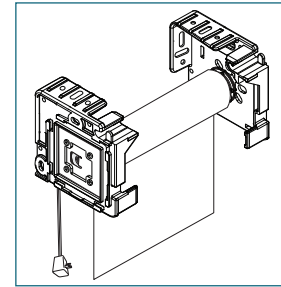


LOCKED



Rotate the nut on the idle end clockwise until it meets the tube. This locks the shade into position.

CHECK SHADE OPERATION

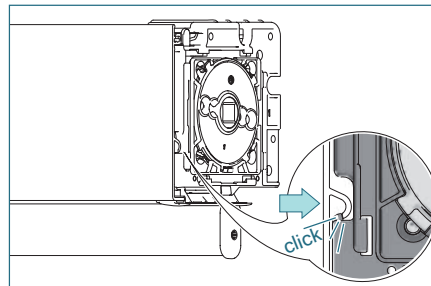
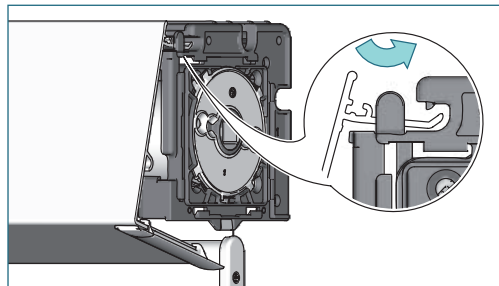


Remove the tape from the shade.

Make sure the shade operates properly. Use separate wiring information per motor type and programming instructions from HDhospitality.com

Adjust leveler if applicable.

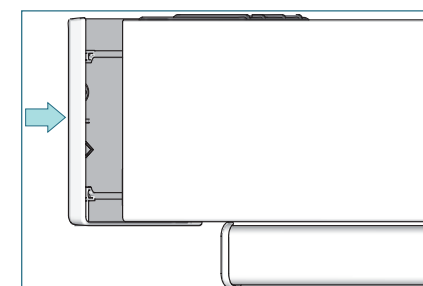
FASCIA INSTALLATION



Place the front fascia profile in the bracket. Make sure that the profile slides under the nose of the bracket.

Push the profile to snap it into the bracket.

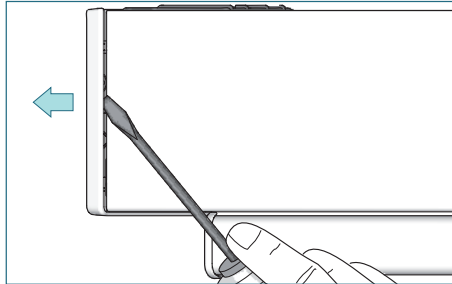
ENDCAP INSTALLATION



Slide the end caps on to the brackets.

Sonesse 30 RTS and Sonesse 30 WireFree (li-ion) RTS with 3" Fascia Motorized Shade Installation

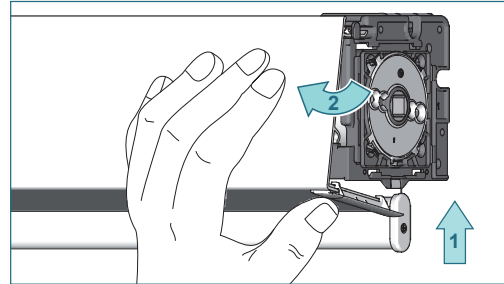
ENDCAP REMOVAL



Place the screwdriver under the end cap on the front of the fascia.

Turn the screwdriver and slide the end cap from the bracket.

FASCIA REMOVAL



Press the bottom of the profile upwards and pull it outwards.

SHADE REMOVAL

DISCONNECT THE MOTOR

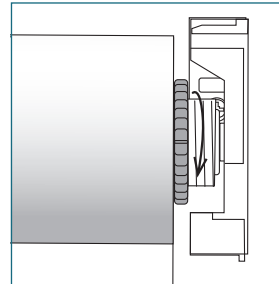
Disconnect the power cable from the electrical source.

RTS 30 - unplug from the outlet

RTS 30 WireFree - make sure the battery charger is not connected to the power cable

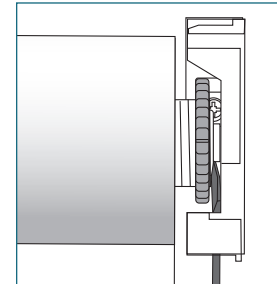
RTS 409 - electrician is required to disconnect the power cable from the junction box.

UNLOCK THE SHADE



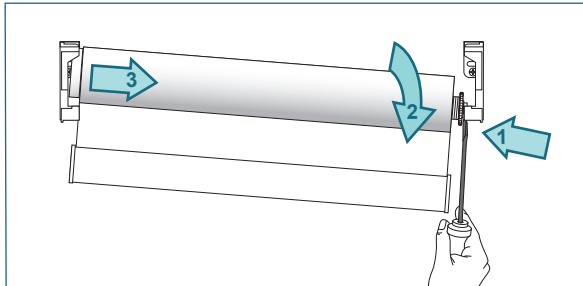
Rotate the nut on the idle end counterclockwise to unlock the shade.

REMOVE IDLE END



Slide a flat head screwdriver between the idle end plug and bracket and push towards the clutch end to remove the plug from the bracket.

REMOVE MOTOR END



Move the shade downward and out of the clutch bracket.