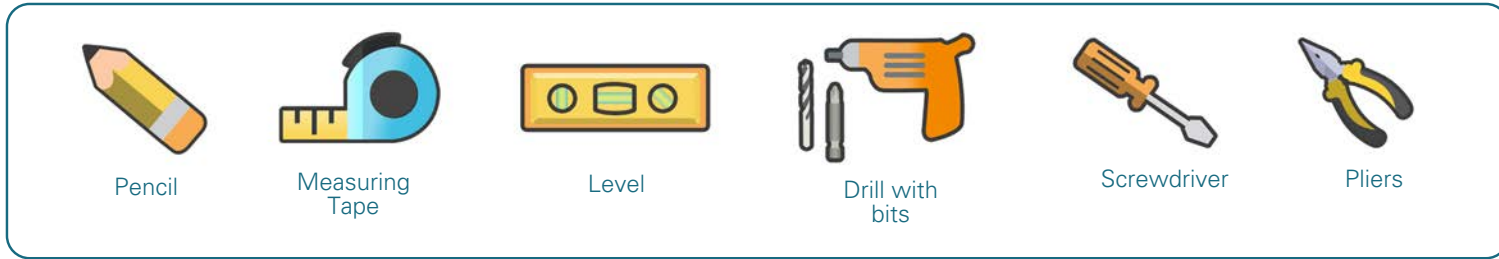


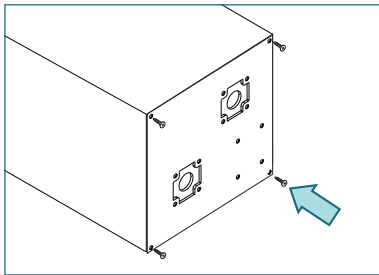
Standard+ with 5.25" Dual Pocket Manual Clutch Installation

TOOLS NEEDED



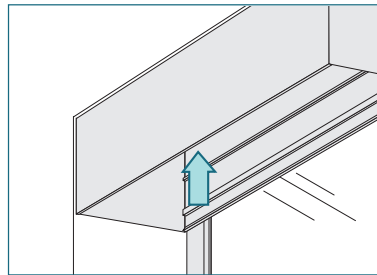
INSTALLING THE BRACKETS

ATTACH THE BRACKETS

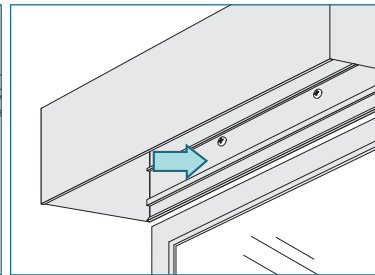


If the brackets are not already attached to the pocket, use the screws provided to attach the brackets to each side of the pocket.

CEILING MOUNT



SURFACE/WALL MOUNT



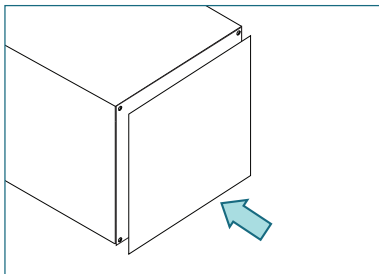
Mount into wood or metal studs or into concrete with concrete anchors. Drywall anchors are not recommended.

Determine the mounting location.
a) ceiling b) surface/wall

Pre-drill the pocket. Mount in place.

END PLATES

ATTACH THE END PLATE

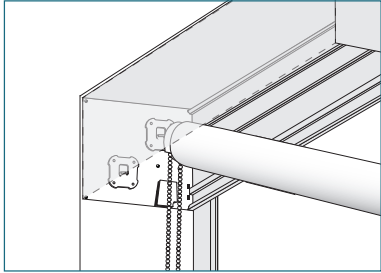


Remove tape from the end plate and attach to the bracket. Use to conceal exposed ends.

Standard+ with 5.25" Dual Pocket Manual Clutch Installation

INSTALLING THE SHADE - Do not remove the tape around the shade until it is fully installed

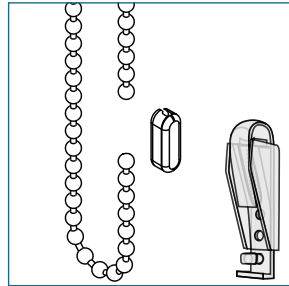
BACK SHADE



Install the back shade first. Place the clutch onto the clutch bracket.

Push the shade against the clutch end and lift the roller shade up until the end plug fits into the center of the idle bracket.

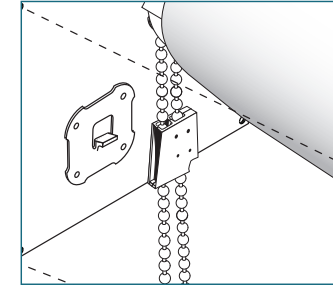
BACK SHADE CHAIN GUIDE



Remove the tape around the back shade.

Remove the chain connector from both sides of the chain.

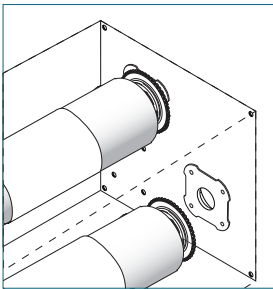
Remove the cord tensioner from the chain.



Thread the chain through the chain guide.

Replace the cord tensioner then reconnect the chain with the chain connector.

IDLE BRACKET VIEW

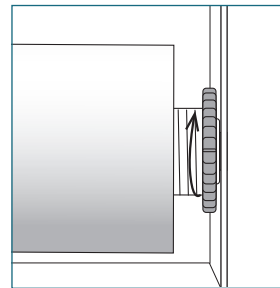


Install the front shade. Place the clutch onto the clutch bracket.

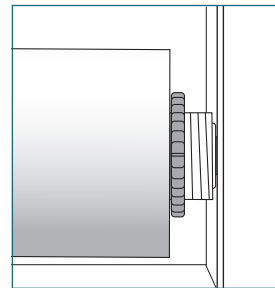
Push the shade against the clutch end and lift the roller shade up until the end plug fits into the center of the idle bracket.

LOCK THE SHADES

UNLOCKED



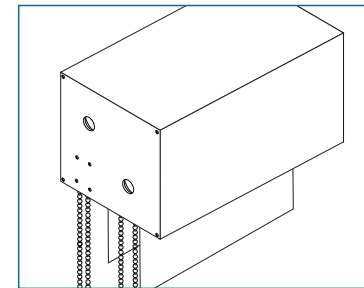
LOCKED



Rotate the nut on the idle end clockwise until it meets the tube.

This locks the shade into position.

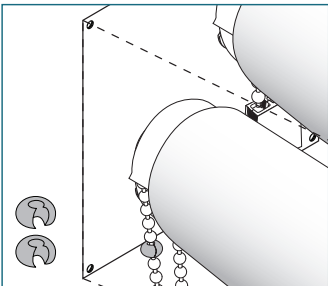
CHECK SHADE OPERATION



Remove the tape from the shades.

Make sure both shades operate properly. Pull the front chain down to raise the shade. Pull the back chain down to lower the shade.

BALL STOP INSTALLATION



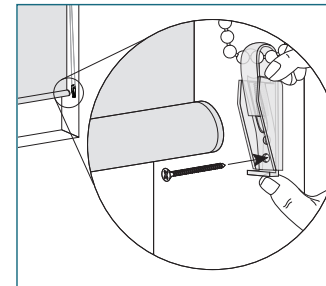
SET LOWER LIMIT

Lower shade to the bottom of the window opening. Place a ball stop over the chain in front of the clutch and secure using pliers. (Reverse roll - Place ball stop over chain in back of the clutch.)

SET UPPER LIMIT

Raise shade to the desired height. Place a ball stop over the chain in back of the clutch and secure using pliers. (Reverse roll - Place ball stop over chain in front of the clutch.)

CORD TENSIONER INSTALLATION



Be sure the cord tensioner(s) is not placed in the path of the bottom rail and fabric.

Unlock the cord tensioner by removing the plug from the screw hole and pushing down.

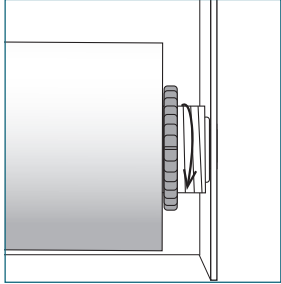
Hold the cord tensioner firmly in place and check that the bead chain, ball stop, and chain connector can move freely through it. The chain should not be taught.

Mark the screw hole with a pencil. Attach the cord tensioner directly to the wall using a 1½" screw. Use a wall anchor if necessary.

Standard+ with 5.25" Dual Pocket Manual Clutch Installation

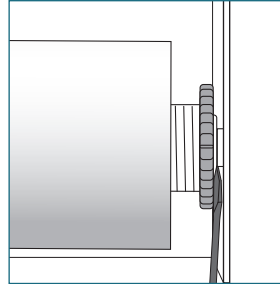
SHADE REMOVAL

UNLOCK THE SHADES



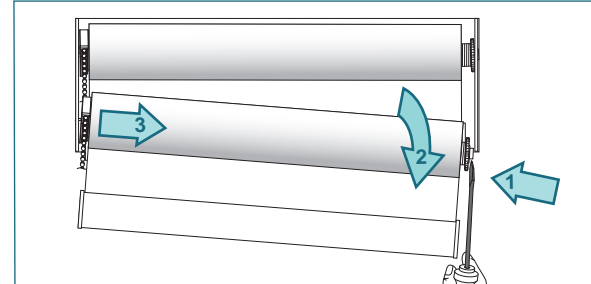
Rotate the nut on the idle end counterclockwise to unlock the shade.

REMOVE FRONT SHADE IDLE END



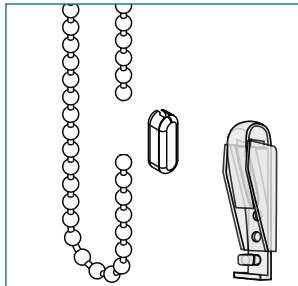
Slide a flat head screwdriver between the idle end plug and bracket and push towards the clutch end to remove the plug from the bracket.

REMOVE FRONT SHADE



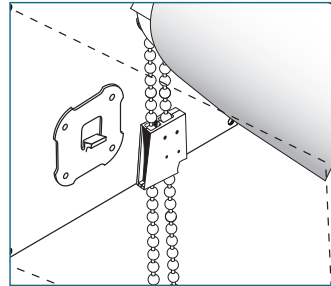
Move the shade downward and out of the clutch bracket.

REMOVE BACK SHADE CHAIN GUIDE



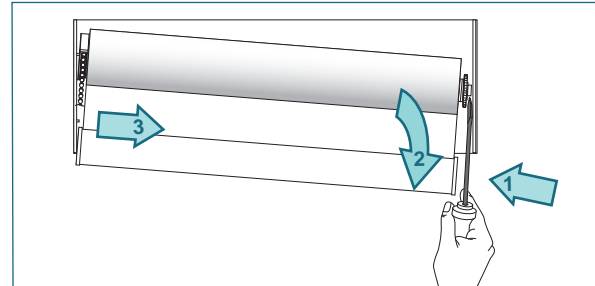
Remove the chain connector from both sides of the chain.

Remove the cord tensioner from the chain.



Thread the chain out of the chain guide.

REMOVE BACK SHADE



Slide a flat head screwdriver between the idle end plug and bracket and push towards the clutch end to remove the plug from the bracket.

Move the shade downward and out of the clutch bracket.