

RB 500™ Crank Operated Shade

Diagram

Crank operation allows the user to safely raise and lower oversized and hard-to-reach windows with one easy-to-use crank. The gear box assembly is made from die cast aluminum and steel construction with a steel crank insert.

SPECIFICATIONS

Mount: **Ceiling, Wall, or End Mount**

Crank Color: **Grey**

Bracket Color: **Grey**

Bracket Cover Colors: **Black, Grey, & White**

Crank Handle: **Permanently mounted (Standard), Detachable available upon request**

Crank Tube Length: **Custom length available upon request—20' max**

Hembar **Determined by shade fabric selection**

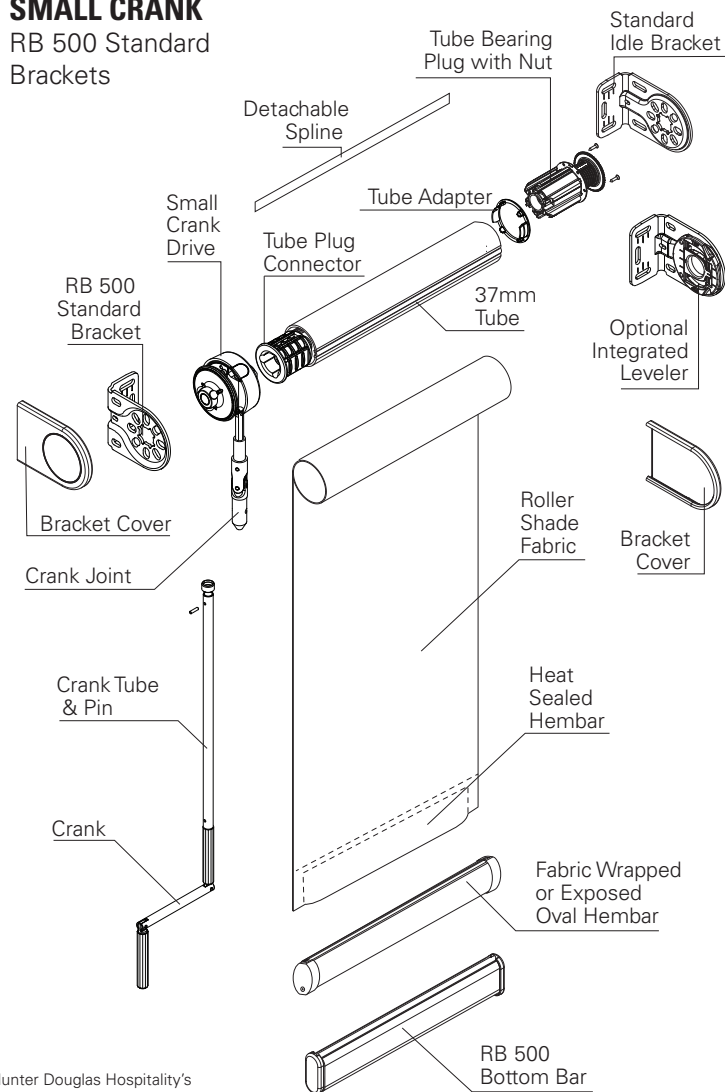
Crank Type	Tube Size	Max. Width	Max. Height	Max. Weight
Small Crank	50mm (2")	120"*	180"	16.5 lbs
Heavy Duty Crank**	50mm (2")	120"*	120"	28.66 lbs
Heavy Duty Crank**	62mm (2.4")	192"*	150"	23.36 lbs

* Maximum shade width may be less depending on the weight and/or available width of the fabric

** Heavy Duty Crank has a built in stop

SMALL CRANK

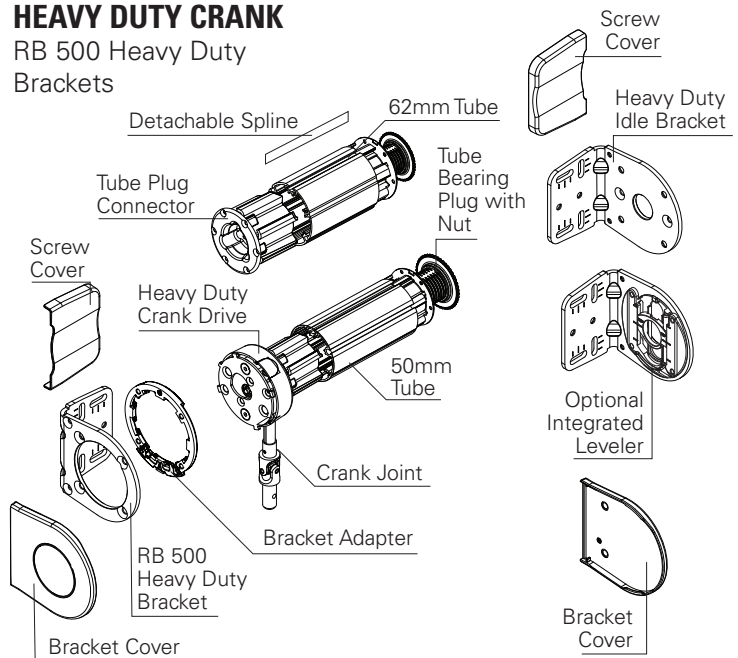
RB 500 Standard Brackets



Hunter Douglas Hospitality's products vary in weight and require specific mounting points. Suitable mounting surface and structural support where needed is to be provided by others.

HEAVY DUTY CRANK

RB 500 Heavy Duty Brackets



OPTIONS

- Fascia: 3" (Small Crank Only), 4" — Colors: White, Vanilla, Aluminum, Bronze, Black
- Pocket: 5.25" and 9" — Colors: White and Aluminum
- Banded: Single Brackets, Fascia, RB 500 Blockout
- Coupled: Single Brackets, Fascia, RB 500 Blockout
- RB 500 Blockout System:
 - 3" (Small Crank Only) or 4" Fascia with back fascia
 - 5.25" or 9" Pocket with bottom closure
 - Side Channels with Wool Pile — Colors: White, Vanilla, Aluminum, Bronze, Black
 - RB 500 Bottom Bar with Wool Pile — Colors: White, Vanilla, Aluminum, Bronze, Black