

Coupled **Standard+** and **Heavy Duty+** Manual Clutch Installation

TOOLS NEEDED



Pencil



Measuring
Tape



Level



Drill with
bits



Screwdriver



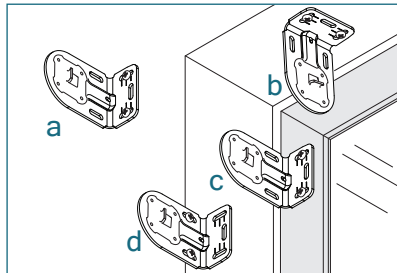
Allen Key
(provided with
optional Leveler)



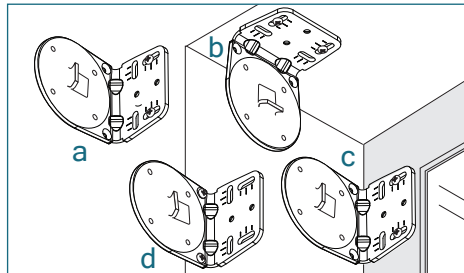
Pliers

INSTALLING THE BRACKETS

STANDARD+ BRACKETS



HEAVY DUTY+ BRACKETS



Mount into wood or metal studs or into concrete with concrete anchors. Drywall anchors are not recommended.

Determine the mounting location.
a) surface/wall b) ceiling c) on frame d) in recess

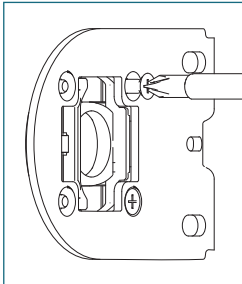
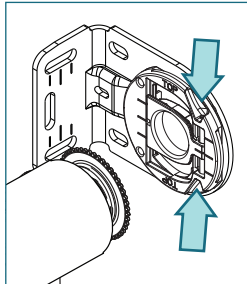
Measure and mark the bracket locations with a pencil.

Mount brackets with the screws provided. Pre-drilling is recommended.

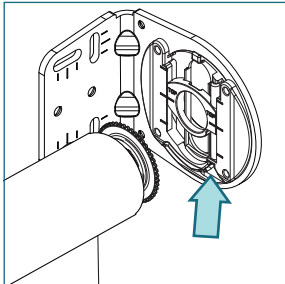
Check that the brackets are level and aligned.

OPTIONAL: INTEGRATED LEVELER

STANDARD+ BRACKET



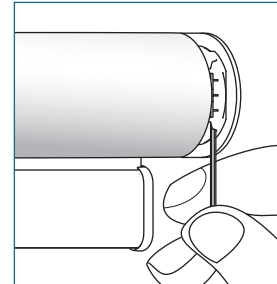
HEAVY DUTY+ BRACKET



Ensure the leveling set screw opening is pointing downwards before installing the bracket.

On the Standard+ Bracket, the orientation can be changed by loosening the two screws (M3x6) and turning the leveler 90°. Fix the screws after turning.

ADJUST LEVELER



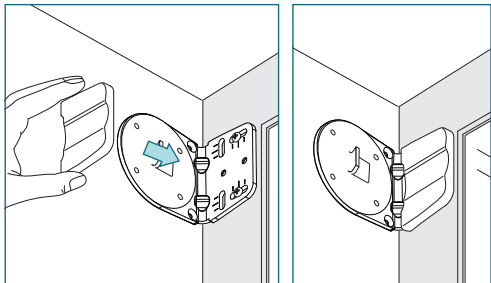
Insert the provided Allen key into the set screw of the leveler.

Adjust skewing by turning the Allen key left or right to move the shade up or down. Support the shade with your hand if necessary.

All adjustments can be made after the shade has been installed and after the operation has been tested.

SCREW COVER INSTALLATION

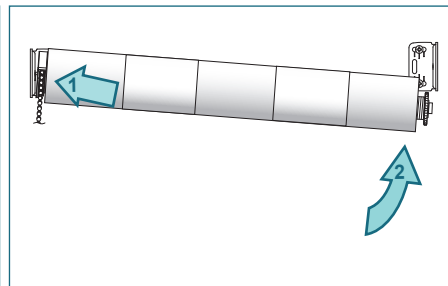
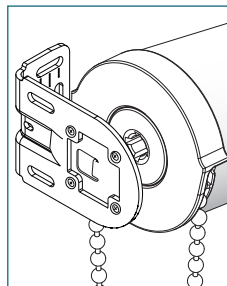
HEAVY DUTY+ BRACKET SCREW COVERS



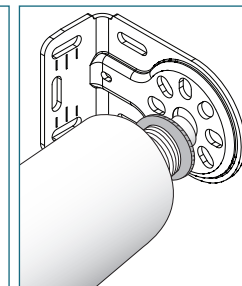
Slide the screw cover over the bracket until it snaps in place.

INSTALLING THE SHADE - Do not remove the tape around the shade until it is fully installed

CLUTCH BRACKET



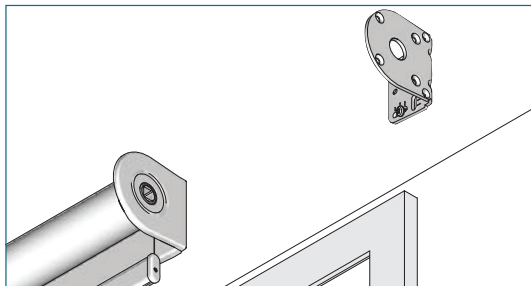
IDLE BRACKET



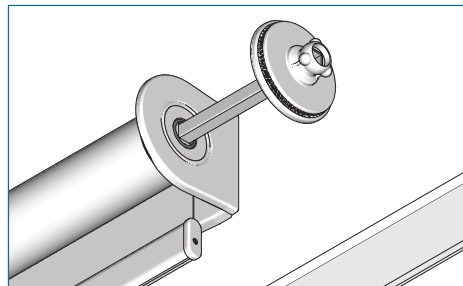
Place the clutch onto the clutch bracket.

Push the shade against the clutch end and lift the roller shade up until the end plug fits into the center of the idle bracket.

MOUNT OUTER BRACKET AND COUPLER

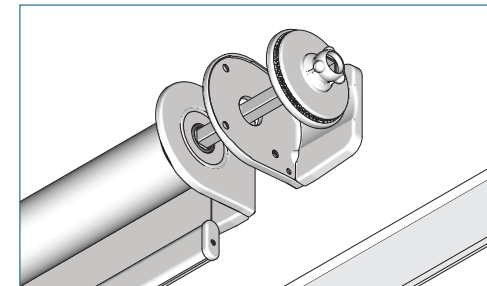


Fix the outer bracket inside the pocket with the screws provided.



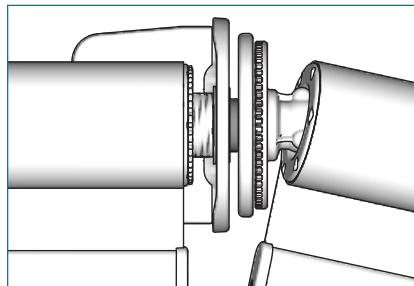
Slide the aligner or the connector through the bracket into the idle end.

COUPLING 2 INTERMEDIATE BRACKETS

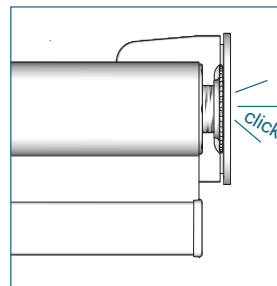
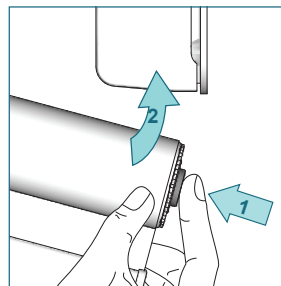


Fix the inner bracket with the screws provided. Slide the aligner or the connector through the bracket into the idle end.

MOUNT THE COUPLED SHADE

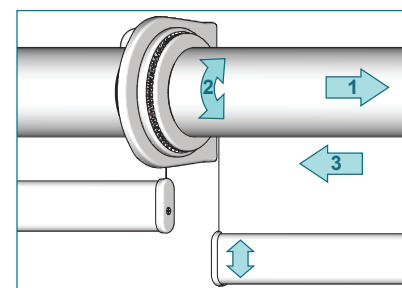


Place the tube with plug connector on the aligner or connector set head.



Press the tube bearing plug, lift the roller shade and snap into the idle bracket end.

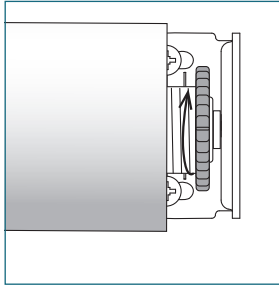
ALIGNER SET ADJUSTMENT



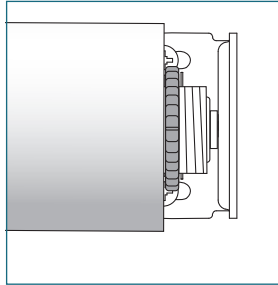
To align the bottom hembar, pull the shade away from the aligner set (1), turn the shade to line up the bottom hembar together (2). Release the shade to secure the position (3). Not possible when using a connector set.

LOCK THE SHADES

UNLOCKED

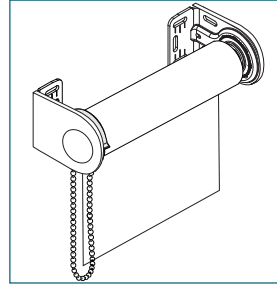


LOCKED



Rotate the nut on the idle end clockwise until it meets the tube. This locks the shade into position.

CHECK SHADE OPERATION

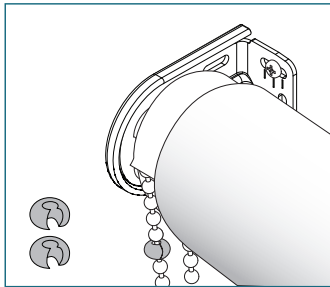


Remove the tape from the shade.

Make sure the shade operates properly. Pull the front chain down to raise the shade. Pull the back chain down to lower the shade.

Adjust leveler if applicable.

BALL STOP INSTALLATION



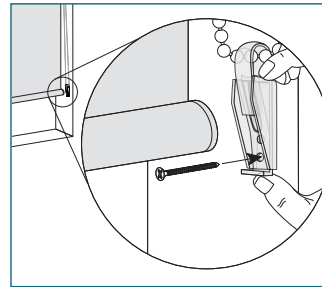
SET LOWER LIMIT

Lower shade to the bottom of the window opening. Place a ball stop over the chain in front of the clutch and secure using pliers.

SET UPPER LIMIT

Raise shade to the desired height. Place a ball stop over the chain in back of the clutch and secure using pliers.

CORD TENSIONER INSTALLATION



Be sure the cord tensioner is not placed in the path of the bottom rail and fabric.

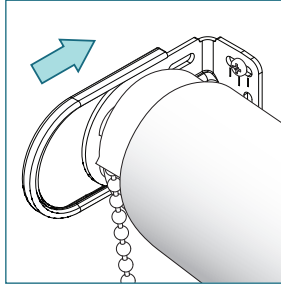
Unlock the cord tensioner by removing the plug from the screw hole and pushing down.

Hold the cord tensioner firmly in place and check that the bead chain, ball stop, and chain connector can move freely through it. The chain should not be taught.

Mark the screw hole with a pencil. Attach the cord tensioner directly to the wall using a 1 1/2" screw. Use a wall anchor if necessary.

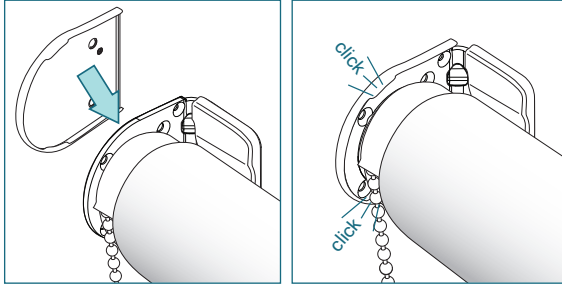
BRACKET COVER INSTALLATION

STANDARD+ BRACKET



Slide the end caps onto the brackets.

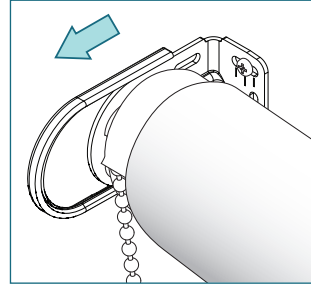
HEAVY DUTY+ BRACKET



Snap the end caps onto the brackets until it clicks into place.

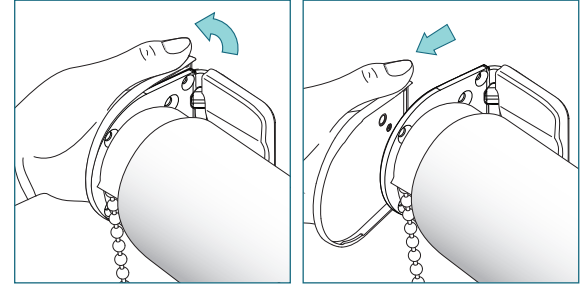
BRACKET COVER REMOVAL

STANDARD+ END CAPS



Slide the end cap towards you to remove from the bracket.

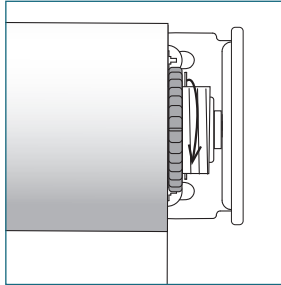
HEAVY DUTY+ END CAPS



Lift the backside of the endcap away from the bracket, then slide the end cap towards you.

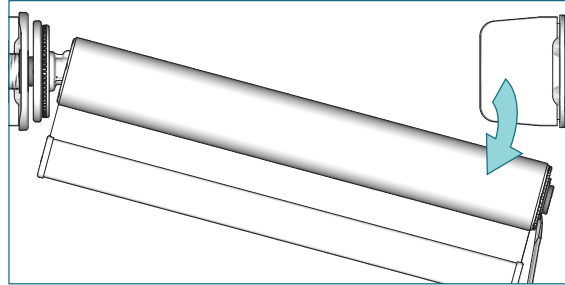
SHADE REMOVAL

UNLOCK THE SHADE

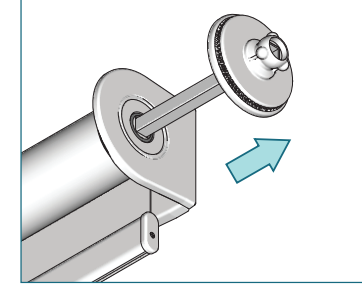


Rotate the nut on the idle end counterclockwise to unlock the shade.

REMOVE COUPLED SHADE FIRST

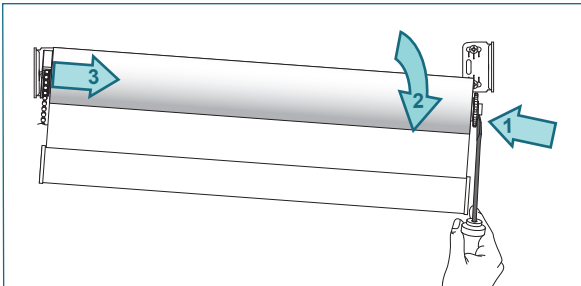


Place a screwdriver between the bracket and bearing plug and push towards the aligner to remove the shade. Move the shade downward and out of the bracket. Remove the aligner or connector from the bearing plug.



Slide the aligner or the connector out of the shade.

REMOVE CLUTCH END



Move the shade downward and out of the clutch bracket.