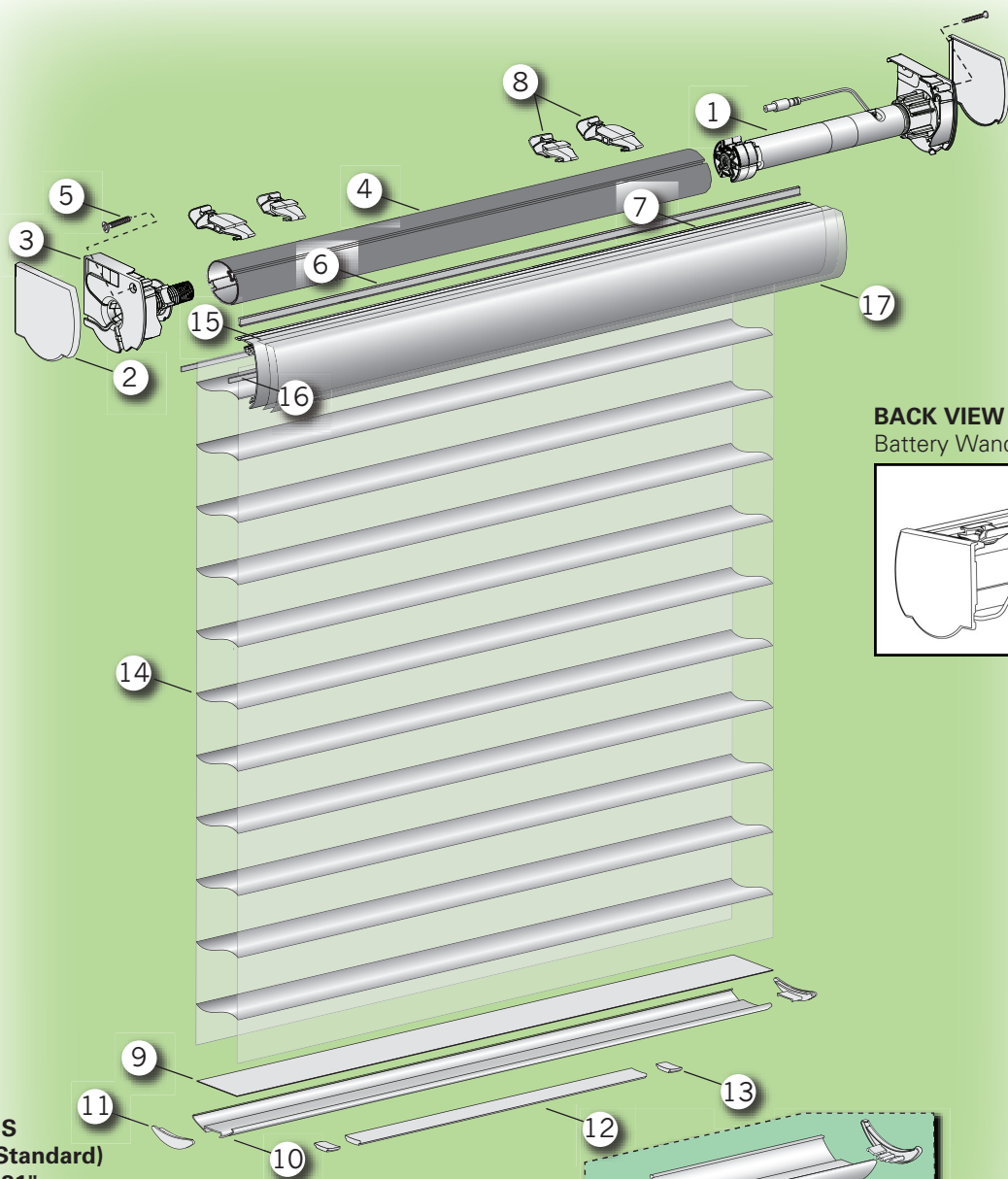
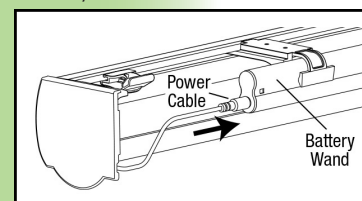


Silhouette® Shadings



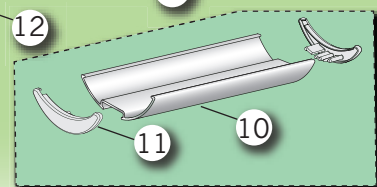
BACK VIEW
Battery Wand location



SPECIFICATIONS

Battery Wand (Standard)

Minimum Width **21"**
 Maximum Width **120"**
 Minimum Height **12"**
 Maximum Height Originale **126"**
 Maximum Height Bon Soir **112"**
 Hardware Color **Coordinates with the fabric**



Only Used On 3" Silhouette® Fabrics

POWER OPTIONS

Battery Wand (Standard)

Voltage **18**
 Battery Quantity **12 AA 1.5V alkaline**
 Battery Life **Approximately one year**
depending on shade type, size, and usage

Additional Power Supplies (must be specified)

C-Size Battery Wand
 18V DC Power Supply

CONTROL OPTIONS

PowerView Surface
 PowerView Remote
 with Pebble
 PowerView Mobile App

MOUNTING REQUIREMENTS

Battery Wand (Standard)

Inside Mount Minimum Depth **2"**
 Inside Mount Minimum Depth Fully Recessed **4-1/16"**
 Outside Mount Flat Surface Height* **1"**
 Recommended Outside Mount Overlap per Side **3"**
 End Mount Minimum Flat Surface Depth **2-1/8"**

* Outside mounts with battery wand require a 3/4" spacer block be used with each installation bracket (included) due to the added clearance needed for the wand.

Hunter Douglas Hospitality's products vary in weight and require specific mounting points. Suitable mounting surface and structural support where needed is to be provided by others.

HunterDouglas 
 Hospitality

Silhouette® Shadings

No.	PCN	Description
1.	4151307000	PV End Plate Assy, 23mm RH Sil-OS
2.	End Cap Cover	
	4171291xxx	RH
	4171292xxx	LH
3.	4178581000	SU PR OS Big Bore Idler Assy LH
4.	4150054xxx	Rotator Rail, 0.050 LW, Universal
5.	4174708000	Screw, Flat HD, SQ Drive, #8 x 0.75"
6.	2780229000	Light Block Strip (IB Only)
7.	4171290xxx	Headrail, Fabric Covered
8.	Top Limit	
	4140126000	XL (Used On All 3" Silhouette Fabrics)
9.	Bottom Slat	
	4160144xxx	SU BTTMSLAT 3" (2.5625" Vane)
10.	Bottom Rail	
	4150951xxx	3" – For All 3" Silhouette Fabrics
11.	Bottom Rail End Caps	
	4170950xxx	3" – For All 3" Silhouette Fabrics
12.	4150082xxx	Balance Weight (Bottom Rail Weight)
13.	4150083xxx	Weight Clips
14.	N/A	Fabric
15.	4150153500	SU FW Tape, 3.219" X 320 Yards
16.	4150288785	Polystrip With Tape
17.	N/A	FCH Fabric

xxx = 3-digit color code