

RB 500™ Single Bracket - Heavy Duty+ Clutch

Diagram

SPECIFICATIONS

Mount: **Ceiling, Wall, or End Mount**

Tube Size: **50mm (2") and 62mm (2.5")**

Shade Width: **Over 80"**

Shade Weight: **9 lbs**

Shade Weight with Spring Assist: **13 lbs**

Shade Weight with Counter Balance System: **Over 13lbs**

Light Gap: **Clutch End – 1"**

Idle End – 7/8" (.875")

Chain: **Stainless Steel with 110 lb breaking strength**

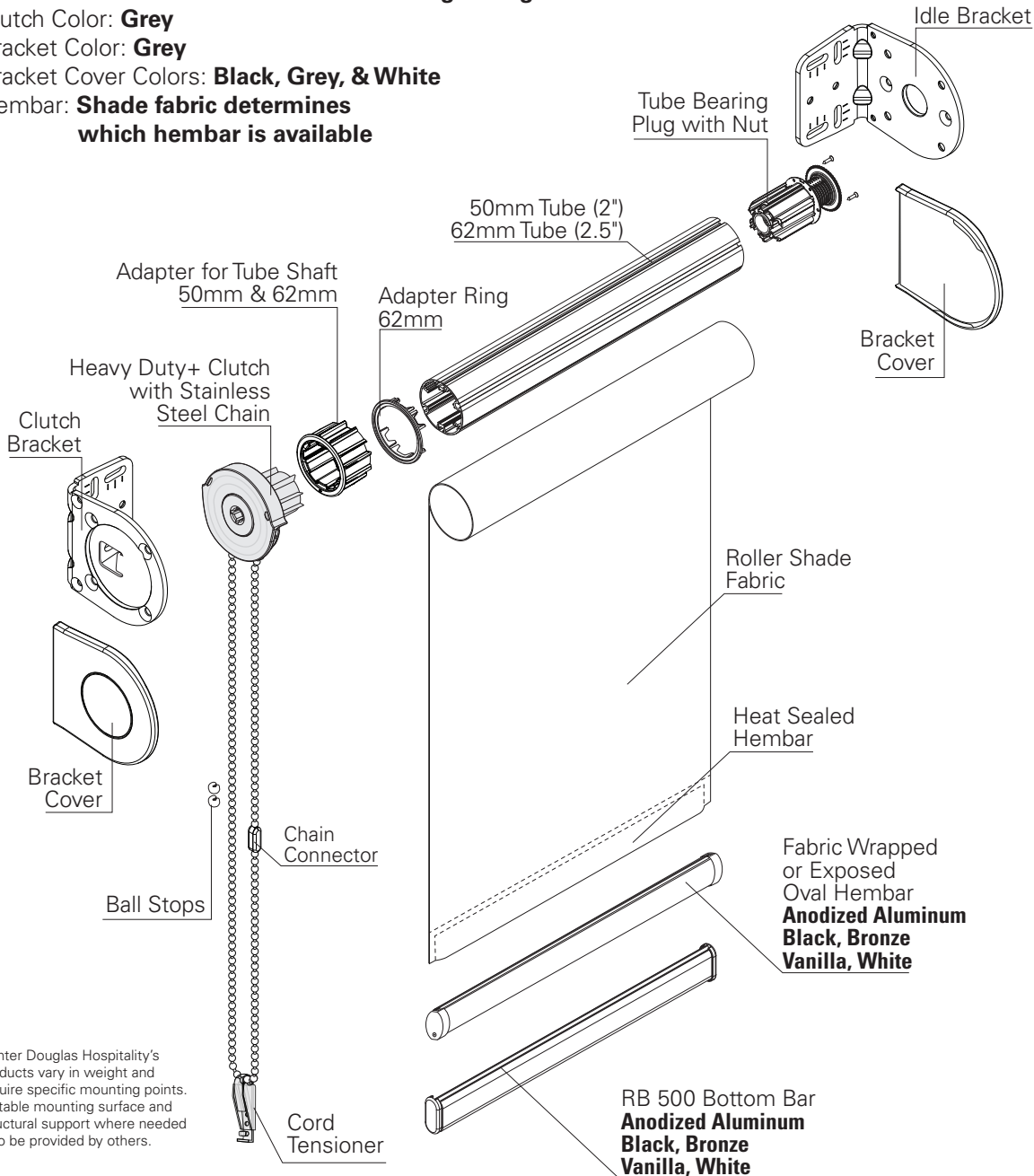
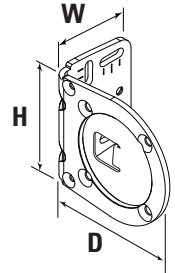
Clutch Color: **Grey**

Bracket Color: **Grey**

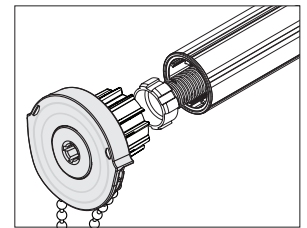
Bracket Cover Colors: **Black, Grey, & White**

Hembar: **Shade fabric determines which hembar is available**

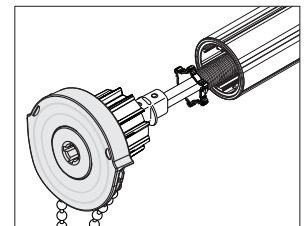
Bracket	Dimensions	Max Roll Up
Bracket 55L	3.46"H x 2.56"W x 3.9"D	3.8"
Bracket 75L	3.46"H x 2.56"W x 4.69"D	5.4"



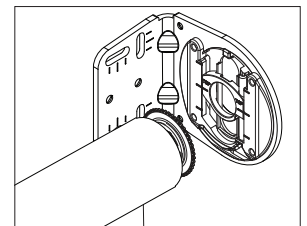
OPTIONS



Spring Assist



Counter Balance System



Integrated Leveler

Hunter Douglas Hospitality's products vary in weight and require specific mounting points. Suitable mounting surface and structural support where needed is to be provided by others.

Las Vegas • Chicago
800.229.5300
HDhospitality.com

© 2018 Hunter Douglas. All rights reserved. All trademarks used herein are the property of Hunter Douglas or their respective owners.

HunterDouglas 
Hospitality