

Americana Real Woods FR

Wood Blinds

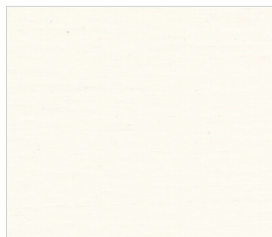
This collection of blinds made from natural wood species offers warm, rich hues and subtle textures. Americana Real Woods will add interest to any window and accommodate any hospitality environment.

FEATURES

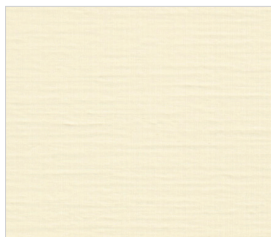
- 2" slats made from natural wood species
- Slats are fire retardant and pass NFPA 701
- Standard cord lift for smooth operation and long-life performance
- Includes a 3" Crown Valance with an easy magnetic installation
- Manufactured in the USA



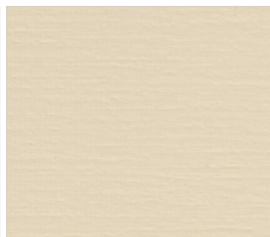
COLORS



Snowflake



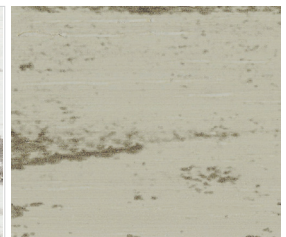
Eggshell



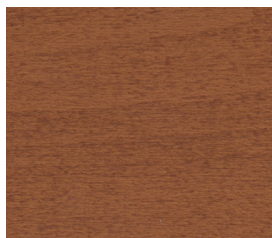
Antique White



Cottage White



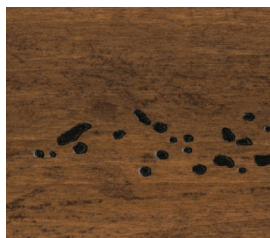
Sand



Sunkissed Oak



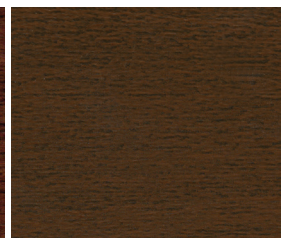
Amber Ale



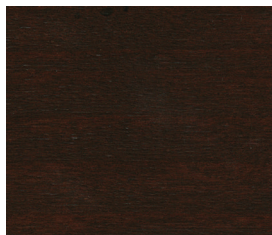
Tavern Oak



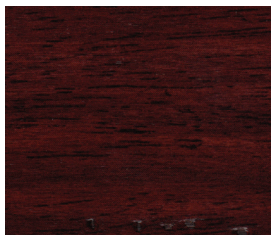
Vintage Sherry



English Walnut



Aged Cognac



Peppered Malbec



Deep Merlot

To request samples please email HDHsamples@hunterdouglas.com

Americana Real Woods FR

Wood Blinds

SPECIFICATIONS

Single Blind

Minimum Width **7"**

Maximum Width Recommended* **72"**

Minimum Height **12"**

Maximum Height **108"**

*Widths over 72" : Two or Three blinds with a common valance is recommended

Note: Blinds that measure 12"–17-7/8" must have split control. Blinds that measure 7"–12" require center tilt only.

OPERATING SYSTEM

Corded Lift with ANSI compliant Cord Stop and Wand Tilt

Available Upon Request **Cord Tilt and Motorized Tilt**

VALANCE

3" Crown



OPTIONS

- Two-on-One — Standard rectangular shades share the same headrail but operate independently; perfect for extra-wide windows
— Controls must be: Left Blind — Left/Left, Right Blind — Right/Right
- Cut-outs available

FR CLOTH TAPE



CARE AND CLEANING

Regular cleaning with a feather duster or soft, clean cloth is suggested. Blinds may also be cleaned using a hand-held vacuum with a brush attachment on low suction. Stained wood blinds should be treated periodically with wood oil or preservative to protect the finish.

Note: Americana Real Woods FR are not intended for use with other window coverings (cornices, roller shades, drapery), which will trap heat between the blind and window resulting in slat warping over time.

Certain wood stain blinds are specifically manufactured with dark braided ladder. Instances of dye transference from ladder to slat have occurred and are not considered to be a defect or warranty issue.

Color images are for illustration purposes only.

For accurate specification, please request product samples at HDHsamples@hunterdouglas.com.

Hunter Douglas Hospitality

Las Vegas • Chicago

800.229.5300

HDhospitality.com



0938SHTAMER