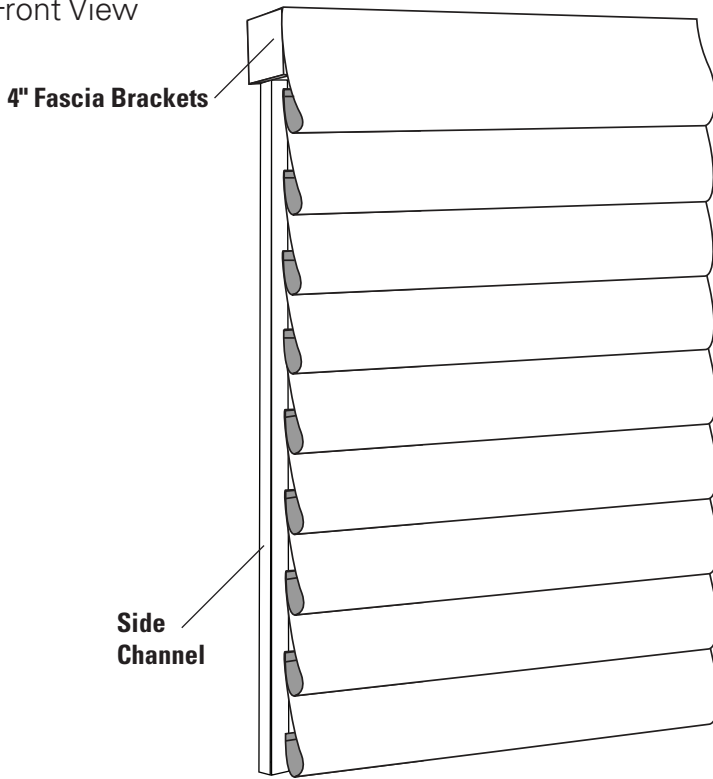


Classic Plus Roman Shade - Motorized

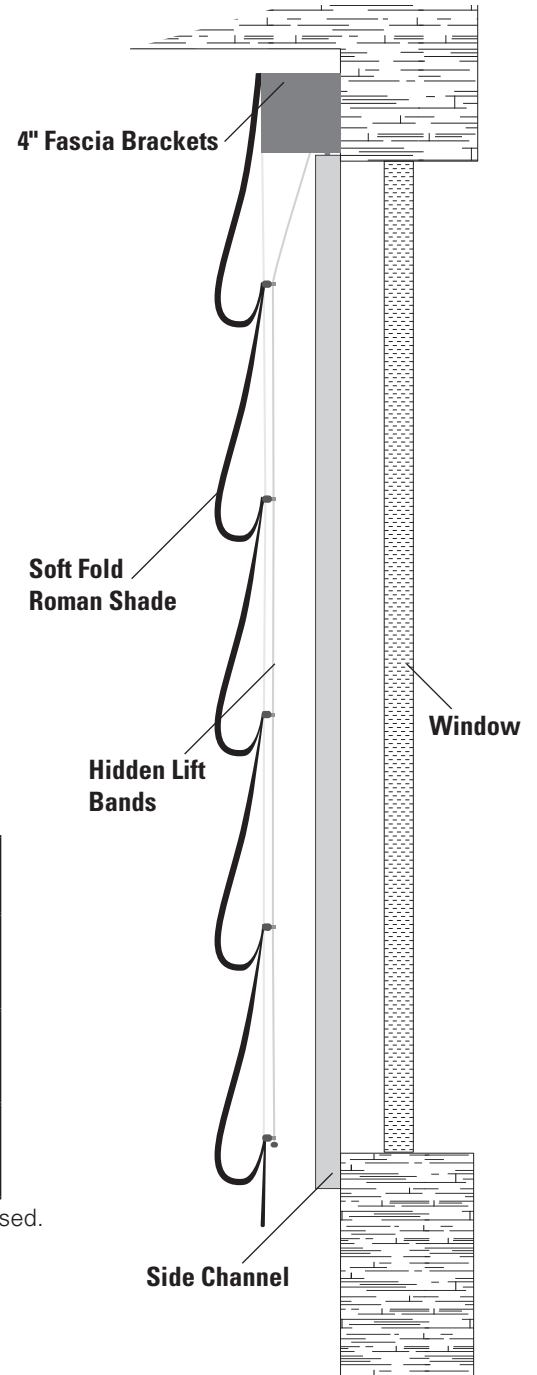
Fabricated Products

The Classic Plus Roman Shade combines the traditional style of a Roman shade with a modern roller shade blackout system.

Front View



Side View

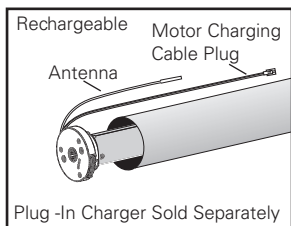


MOTOR OPTIONS

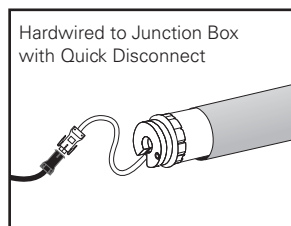
Motor	Max Lift Capacity	Tube Size	Speed	Torque
RTS Ultra 30 WireFree Rechargeable Battery	11 lbs	37 mm (1.5")	28 rpm	2 Nm
RTS 404S2 Hardwired with Quick Disconnect	35 lbs	50 mm (2")	36 rpm	4 Nm
RTS 506S2 Hardwired with Quick Disconnect or Plug-In	52.8 lbs	50 mm (2")	38 rpm	6 Nm

The size of the Roman Shade and the fabric weight will determine which motor will be used.

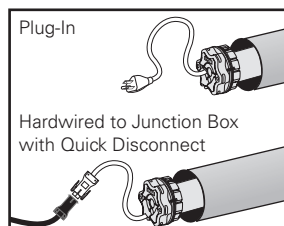
RTS Ultra 30 WireFree



RTS 404S2



RTS 506S2



Hunter Douglas Hospitality's products vary in weight and require specific mounting points. Suitable mounting surface and structural support where needed is to be provided by others.