



Cloud
1525811035

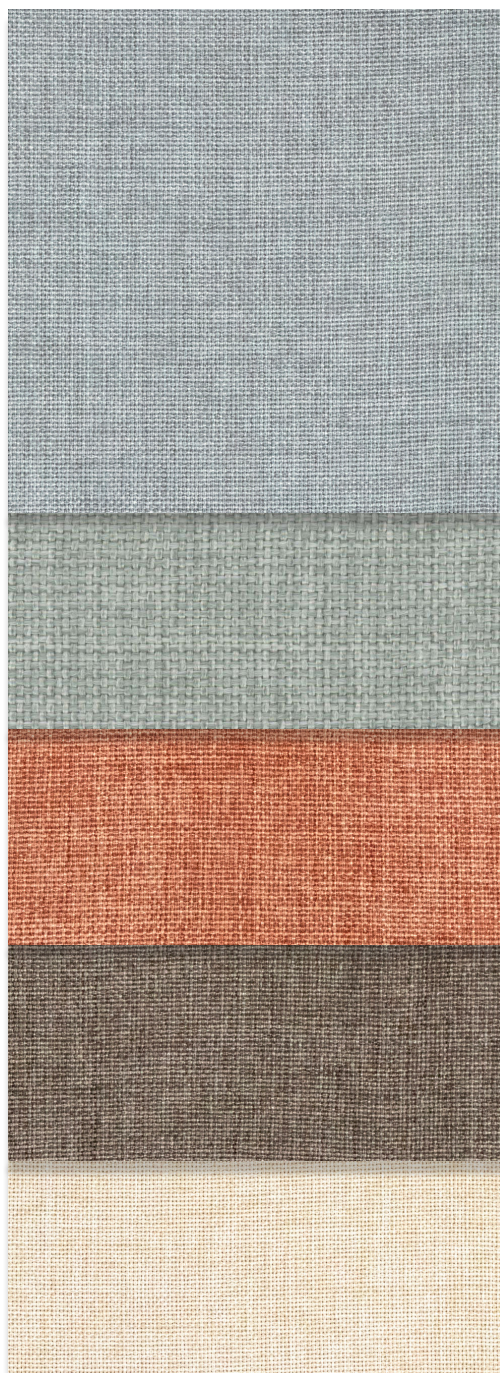
Dew
1525811008

Forest
1525811036

Honey
1525811037

Icicle
1525811014

Otter
1525811031



Powder
1525811038

Seaglass
1525811026

Sienna
1525811039

Slate
1525811040

Straw
1525811041

carole[™]

carolenet.com | carolefabrics.com

HunterDouglas 
Hospitality

hunterdoughospitality.com

Specifications

Piece Size (yds)	50	Abrasion Rating	-
Width (in.)	55	Origin	Turkey
Usable Width (in.)	55	Cleaning Code	Dry Clean Only
Vertical Repeat (in.)	-	G/SM	330
Horizontal Repeat (in.)	-	Yd/Lb	1.2
Fiber Content	100% Polyester	Oz/Linear Yd	14.87
Finish	-	Product Applications	A
Flammability Ratings	Inherently FR-NFPA 701, Cal. Tech. Bull#117, Sec. E	Product Exceptions	16
PFAS Free	Yes	Shown Railroaded	No

CLEANING CODES	
P	Professional dry cleaning recommended
S	Solvent or dry clean products
W	Water-based solutions

PRODUCT APPLICATION CODES	
A	All Carole Custom Products
C	Cornices
D	Draperies
S	Swags
SS	Soft Shades
U	Rated for Upholstery
V	Valances

PRODUCT EXCEPTION CODES	
1	Random textures/slubs will not be pattern matched.
2	Vertical stripes will be cut on the bias on swags and therefore run diagonally. Vertical stripes on pleated products may not evenly appear along pleats.
3	Patterns best suited for shades less than 51" wide.
4	Pattern will be slightly hidden by the folds of the Hobbled, Front Fold and Reverse Fold Roman Shades.
6	Fabric not suitable for banding or trim.
7	Tissue pick fabrics have yarns found along the back of the fabric that can potentially be seen through the lining of window treatments.
8	Fabric not suitable for blackout lining or interlining.
9	Fabric not suitable for Hobbled, Front Fold, and Reverse Fold Roman Shades.
10	Soft Shades - only available for Soft Roman and Slouch Shade.
11	When Soft Shades are in the "up" position, folds will not lay crisp if vertical tape trim is applied.
12	Fabric not suitable for Ripplefold Draperies.
13	Fabric not suitable for Hydra lining.
15	Fabric not suitable for Grommet Draperies.
16	Fabric not suitable for Euro hem.