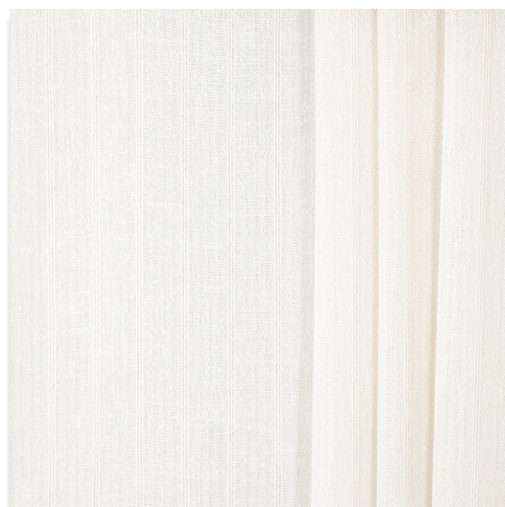
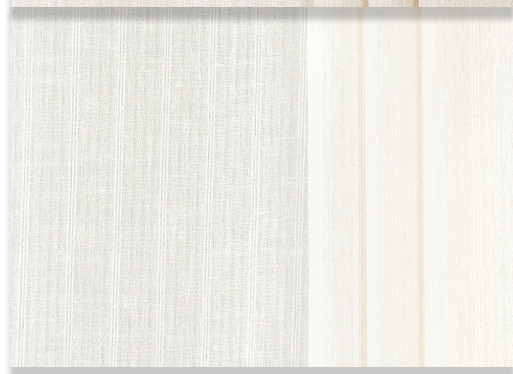




**Beach**  
5429011000



**Pumice**  
5429011002



**Marshmallow**  
5429011001

Specifications

|                         |                        |                      |           |
|-------------------------|------------------------|----------------------|-----------|
| Piece Size (yds)        | 60                     | Abrasion Rating      | -         |
| Width (in.)             | 118                    | Origin               | Turkey    |
| Usable Width (in.)      | 118                    | Cleaning Code        | Dry Clean |
| Vertical Repeat (in.)   | -                      | G/SM                 | 132       |
| Horizontal Repeat (in.) | 1                      | Yd/Lb                | -         |
| Fiber Content           | 100% Polyester         | Oz/Linear Yd         | 12.76     |
| Finish                  | -                      | Product Applications | D         |
| Flammability Ratings    | Inherently FR-NFPA 701 | Product Exceptions   | 6, 15     |
| PFAS Free               | Yes                    | Shown Railroaded     | Yes       |

| CLEANING CODES |                                       |
|----------------|---------------------------------------|
| P              | Professional dry cleaning recommended |
| S              | Solvent or dry clean products         |
| W              | Water-based solutions                 |

| PRODUCT APPLICATION CODES |                            |
|---------------------------|----------------------------|
| A                         | All Carole Custom Products |
| C                         | Cornices                   |
| D                         | Draperies                  |
| S                         | Swags                      |
| SS                        | Soft Shades                |
| U                         | Rated for Upholstery       |
| V                         | Valances                   |

| PRODUCT EXCEPTION CODES |  |
|-------------------------|--|
| 1                       | Random textures/slubs will not be pattern matched.   |
| 2                       | Vertical stripes will be cut on the bias on swags and therefore run diagonally. Vertical stripes on pleated products may not evenly appear along pleats. |
| 3                       | Patterns best suited for shades less than 51" wide.  |
| 4                       | Pattern will be slightly hidden by the folds of the Hobbled, Front Fold and Reverse Fold Roman Shades.   |
| 6                       | Fabric not suitable for banding or trim.   |
| 7                       | Tissue pick fabrics have yarns found along the back of the fabric that can potentially be seen through the lining of window treatments.                  |
| 8                       | Fabric not suitable for blackout lining or interlining.  |
| 9                       | Fabric not suitable for Hobbled, Front Fold, and Reverse Fold Roman Shades.  |
| 10                      | Soft Shades - only available for Soft Roman and Slouch Shade.  |
| 11                      | When Soft Shades are in the "up" position, folds will not lay crisp if vertical tape trim is applied.  |
| 12                      | Fabric not suitable for Ripplefold Draperies.  |
| 13                      | Fabric not suitable for Hydra lining.  |
| 15                      | Fabric not suitable for Grommet Draperies.   |
| 16                      | Fabric not suitable for Euro hem.  |