

PowerView® with LightLock™

SPECIFICATIONS

Minimum Width **19"**
 Maximum Width **144"**
 Minimum Height **6"**
 Maximum Height **144"**
 Maximum Square Feet
108/96*

Headrail Color **Coordinates with the fabric**

LightLock Channel Color
Available in Aspen White, Gardenia White, and Bronze

*108 sq ft up to 108" Width/96 sq feet up to 144" Width.

POWER OPTIONS

Rechargeable Battery Wand (Standard)

Battery Life **Approximately one year depending on shade type, size, and usage**

Additional Power Supplies (must be specified) **C-**

Size Battery Wand

18V DC Power Supply

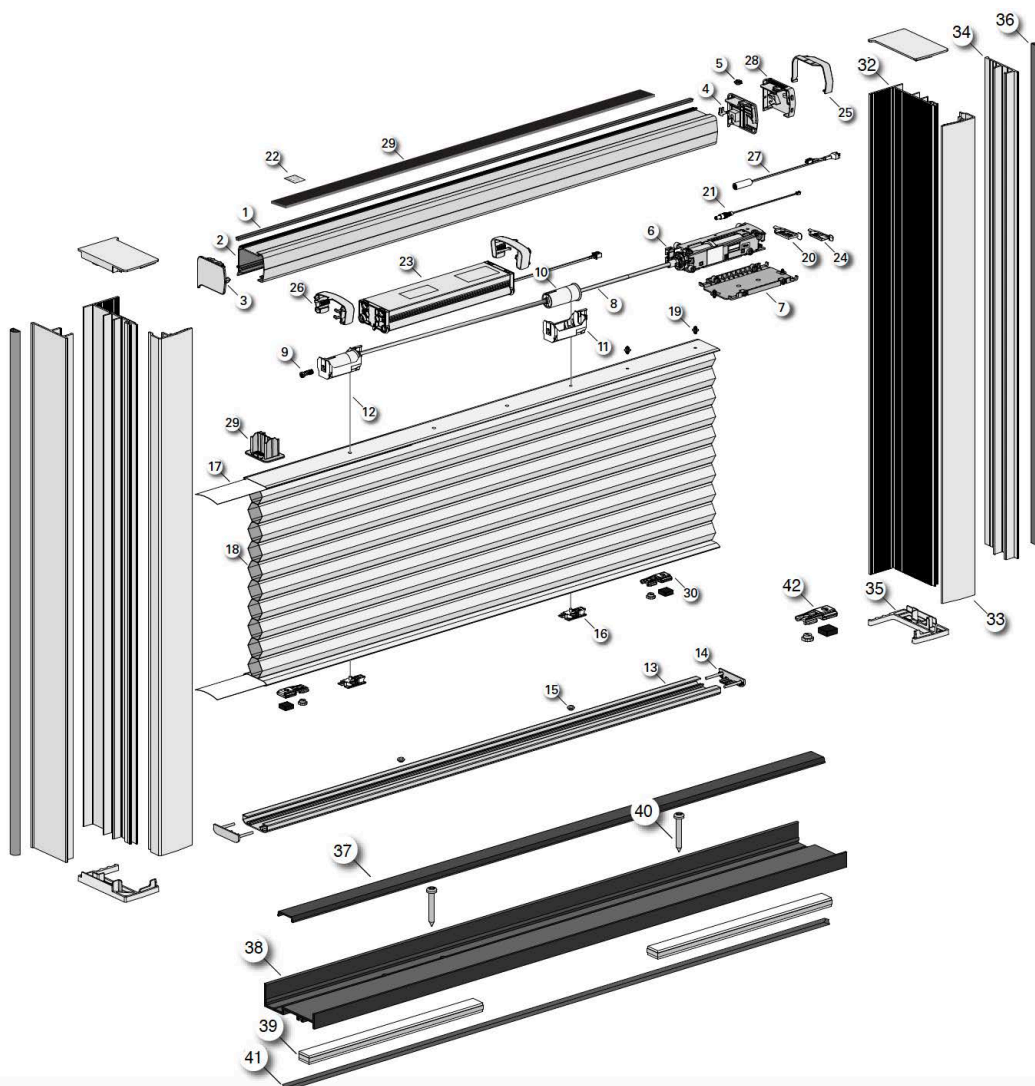
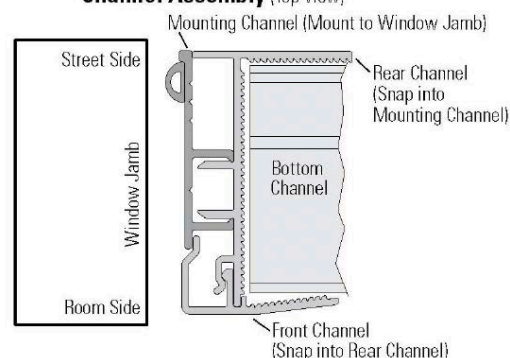
CONTROL OPTIONS

PowerView Surface

PowerView Remote with Pebble

PowerView Mobile App

Channel Assembly (Top View)



MOUNTING REQUIREMENTS Inside Mount Only

Rechargeable Battery Wand (Standard)

Minimum Casement Depth **1 1/4"**

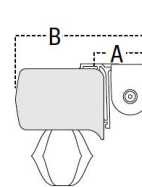
Minimum Casement Depth Fully Recessed **3 1/4"**

Internal Rechargeable Battery Wand

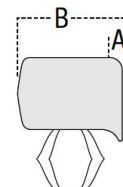
Minimum Casement Depth **1/2"**

Minimum Casement Depth Fully Recessed **2 1/2"**

For optimal light blockage, mount must be fully recessed



Headrail-Mounted Rechargeable Battery Pack (Standard)



Internal Rechargeable Battery, Satellite Battery Pack, C-size OR Rechargeable Battery Wand OR DC Power Supply (Optional)

Hunter Douglas Hospitality's products vary in weight and require specific mounting points. Suitable mounting surface and structural support where needed is to be provided by others.

HunterDouglas 
 Hospitality

No.	PCN	Description
1.	2780229002	Headrail Light Block Strip
2.	Headrail	
3.	LH Headrail End Cap	
4.	RH Headrail End Cap Assembly	
5.	1036011	End Cap Twist Lock, $\frac{3}{4}$ " & $1\frac{1}{4}$ "
	2780478000	Clutch Lock, $\frac{3}{8}$ " only
6.	1037410	PVG3Tsukasa Main Motor
7.	1046932	$1\frac{1}{4}$ " Adapter Plate ($1\frac{1}{4}$ " only)
8.	2770004000	V-Shaft (steel)
9.	Screw Shaft Retainer	
	1040390	Standard spool screw
	1046378	Long drop spool screw
10.	Lift Spool	
	1019884	Standard (gray)
	1021054	Long Drop (gray)
11.	Lift Spool Support	
	2780033000	Standard
	2780105000	Long Drop
12.	1003020	0.9 mm Cord, White
13.	Bottom Rail	
14.	Bottom Rail End Cap	
15.	2780923000	EasyAdjust Pocket Cover (4000/ carton)
16.	EasyAdjust Assembly	
	1046406	$\frac{3}{8}$ ", $\frac{3}{4}$ "
	1046405	$1\frac{1}{4}$ "
17.	Filler Strip	
	2954000000	$\frac{3}{8}$ "
	1000002	$\frac{3}{4}$ "
	2971311000	$1\frac{1}{4}$ "
18.	N/A	Fabric
19.	2911677000	PV SMM Fabric Lock Pin, $\frac{3}{8}$ " & $\frac{3}{4}$ " only
20.	PV Tsukasa Lens (for non-IRB only)	
	1046379	$\frac{3}{4}$ "
	1046380	$1\frac{1}{4}$ "
21.	1043178	Barrel connector pigtail (for non-IRB only)
22.	1046903	FCC Label

Shades with IRB

23.	1037259	Internal Rechargeable Battery pack, Full Charge, 24CT
24.	PV IRB Tsukasa Lens	
	1047844	$\frac{3}{4}$ "
	1047845	$1\frac{1}{4}$ "
25.	PV IRB Shipping Clip, Orange	
	1048871	$\frac{3}{4}$ "
	1048872	$1\frac{1}{4}$ "
26.	1049236	PV IRB Adapter Clip, $1\frac{1}{4}$ ", Natural
27.	1049057	Y-Cable Solar Adapter
28.	PV IRB End Caps	

No.	PCN	Description
-----	-----	-------------

Single-Motor Shades ONLY

29.	Fabric Stack Lock	
	1023366	$\frac{3}{4}$ "
	1023365	$1\frac{1}{4}$ "

Shades with AOS ONLY

30.	2970035000	$\frac{3}{4}$ " Magnet Strip with Foam
-----	------------	--

Shades with LightLock®, LightLock® Flex, or Hold-Down Brackets

31.	KIT2777	Hold-Down Magnet Assembly
-----	---------	---------------------------

Not Shown

Weights (Optional)	
2982129000	3"
2982128000	6"
1049085	Ship Mode Sticker

XXX = 3-digit color code

Note: For LightLock® Flex information, see the LightLock Flex product component guide.

LightLock™

No.	PCN	Description
32	Rear Channel	
	2801687785	Aspen White
	2801687862	Gardenia White
	2801687064	Bronze
33	2801641XXX	Front Channel
34	2801643XXX	Mounting Channel
35	LightLock Kit (2 top and 8 bottom end caps)	
	1015800	Aspen White
	1015801	Gardenia White
	1015802	Bronze
36	2801688048	D-Seal
37	1012957	Sill Channel Cover
38	Sill Channel	
	1012954	Aspen White
	1012955	Gardenia White
	1012956	Bronze
39	2982129000	Rail Weight
40	1014243	#6 Phillips Pan-Head Screws
41	2780229002	Headrail Light-Block Strip

Shades with LightLock or Hold-Down Brackets:

42	KIT2777	Hold-Down Magnet Assembly
----	---------	---------------------------

XXX = 3-digit color code

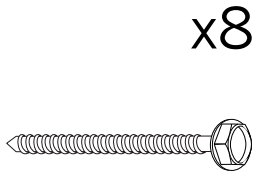
Note: LightLock cannot be installed on Duolite® shades.

Note: LightLock is only available with the PowerView® and LiteRise® operating systems.

Note: Shades cannot be installed with both LightLock and TrackGlide™.

Additional Parts

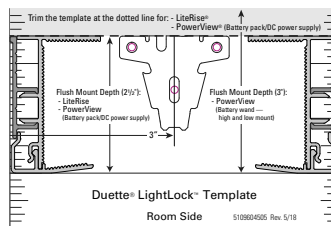
LightLock™



LightLock Screw Kit (8)
KIT2029



LightLock D Seal
PCN 2801688048



LightLock Installation Template
PCN 5109604505